



THE
CLARENDON

WATFORD

THE CLARENDON

WATFORD

With a breathtaking sky garden, this 25-storey development of 168 exquisite private residences comprises a variety of studio, one and two bed apartments and a selection of penthouses each boasting high-specification interiors.

The Clarendon is a development of exceptional quality with outstanding facilities, offering the perfect ownership and investment opportunity.



CGI is indicative only



SET TO BE ONE OF **THE TALLEST**
RESIDENTIAL TOWERS IN THE AREA.

CGI is indicative only

PERFECTLY PLACED - WELCOME TO WATFORD



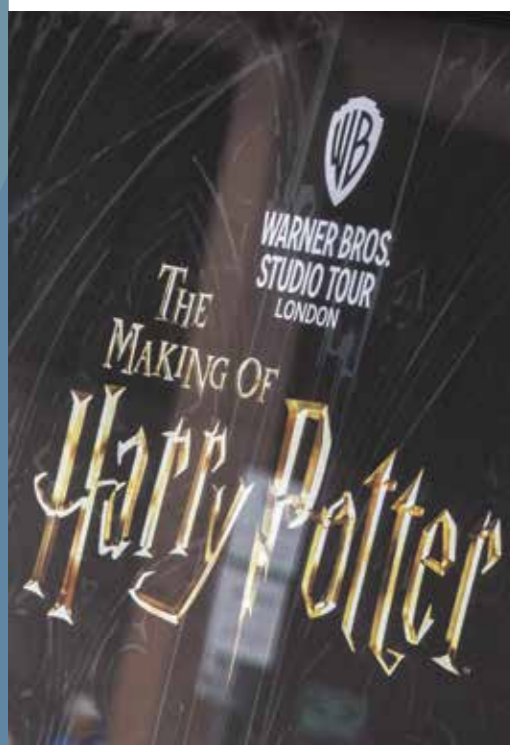
MORE THAN 3,500
BUSINESSES EMPLOYING
IN EXCESS OF
57,000 PEOPLE.



Just minutes from the heart of London, Watford is perfectly placed to enjoy the best of rural Hertfordshire.

The streets that surround The Clarendon and the nearby central quarter have all the shops, cafes, restaurants and pubs that you need.

Watford is undergoing a transformation with many regeneration plans including new homes and businesses with an aim to further develop its thriving community.



LONDON, YOUR NEIGHBOURING CITY

HOME TO MORE THAN **9 MILLION** PEOPLE.

OVER **250** LANGUAGES ARE SPOKEN IN LONDON,
MAKING THE CAPITAL THE MOST LINGUISTICALLY
DIVERSE CITY IN THE WORLD.

London is one of the greatest cities in the world; leading the way in education, finance, technology and entertainment.

From heritage institutions such as Buckingham Palace and the Natural History Museum to thriving West End theatres, London is the perfect place to visit and only 15 minutes by train from your new home, at The Clarendon.

With a direct tube link to the City, overground trains as well as a mainline station, Watford is well connected and ideally situated to explore the best of London, both day and night.



CAPITAL OF CULTURE



LONDON ATTRACTS
21 MILLION
VISITORS A YEAR.

St Paul's Cathedral

London boasts an eclectic mix of restaurants, bars, theatres, music venues and museums. Across London you can discover an enticing mix of culture from East London's vibrant markets and vintage stores to West London's high-end shopping destinations, art galleries and fine dining - it is the place to visit.

You can find 66 Michelin-starred restaurants in the capital with five of them situated in Fitzrovia, a short walk from Euston Station. Easy-going food markets are on almost every street corner, making the City of London vibrant and busy all week long.



Natural History Museum

LONDON IS THE HEART OF CULTURE WITH OVER 800 ART GALLERIES AND ALMOST 200 MUSEUMS.



Regent Street

OVER 7.5 MILLION PEOPLE VISIT REGENT STREET EVERY YEAR.

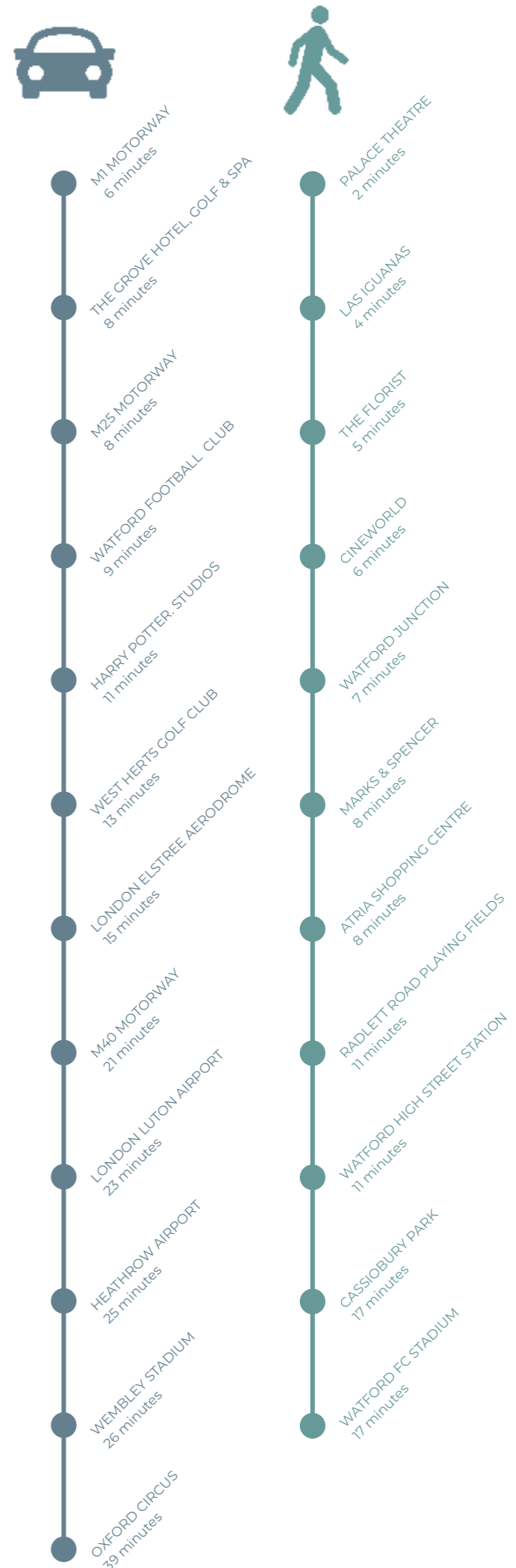
You can find some of the world's biggest names in business in London with a vast number locating their head offices in our capital City.

London is renowned for its world-class education, attracting students from around the globe every year.

The bustling streets of London are complemented by our array of beautiful royal parks, canals and Thames riverside.

The British Museum





CONNECTED TO THE CITY AND BEYOND



King's Cross St Pancras

Within easy walking distance of the London Underground and Overground stations, The Clarendon has great transport links to connect you to the whole of London.

Both M1 and M25 motorway routes are minutes away offering an easy and fast journey further into the British countryside. For those looking to travel abroad, Heathrow airport is just a 25 minute drive away.

15 MINUTE TRAIN FROM LONDON.



- WATFORD JUNCTION
- WATFORD HIGH STREET
- BUSHEY
- CARPENDER'S PARK
- HATCH END
- HEADSTONE LANE
- HARROW & WEALDSTONE
- KENTON
- SOUTH KENTON
- NORTH WEMBLEY
- WEMBLEY CENTRAL
- STONEBRIDGE PARK
- HARLESDON
- WILLESDON JUNCTION
- KENSAL GREEN
- QUEEN'S PARK
- KILBURN HIGH ROAD
- SOUTH HAMPSTEAD
- LONDON EUSTON



- WATFORD
- CROXLEY
- MOOR PARK
- NORTHWOOD
- NORTHWOOD HILLS
- PINNER
- NORTH HARROW
- HARROW-ON-THE-HILL
- NORTHWICK PARK
- PRESTON ROAD
- WEMBLEY PARK
- FINCHLEY ROAD
- BAKER STREET
- GREAT PORTLAND STREET
- EUSTON SQUARE
- KING'S CROSS ST PANCRAS
- FARRINGDON
- BARBICAN
- MOORGATE
- LIVERPOOL STREET
- ALDGATE



155 TRAINS A DAY

15 minutes (direct trains)



EXPLORING WATFORD



Watford Market

Watford, the largest town in Hertfordshire, has a variety of amenities including a unique mix of boutique brands as well as big name brands. Craft cafes and artisan outlets are popular on the high street during the day, and as dusk sets, the thriving nightlife awakes.

Watford Market is located a short stroll from The Clarendon. This regular market is a great place to pick up fresh produce as well as handmade gifts.

Atria shopping centre houses big brands as well as a great selection of smaller, independent shops. You don't need to walk far from The Clarendon to find all that you need.

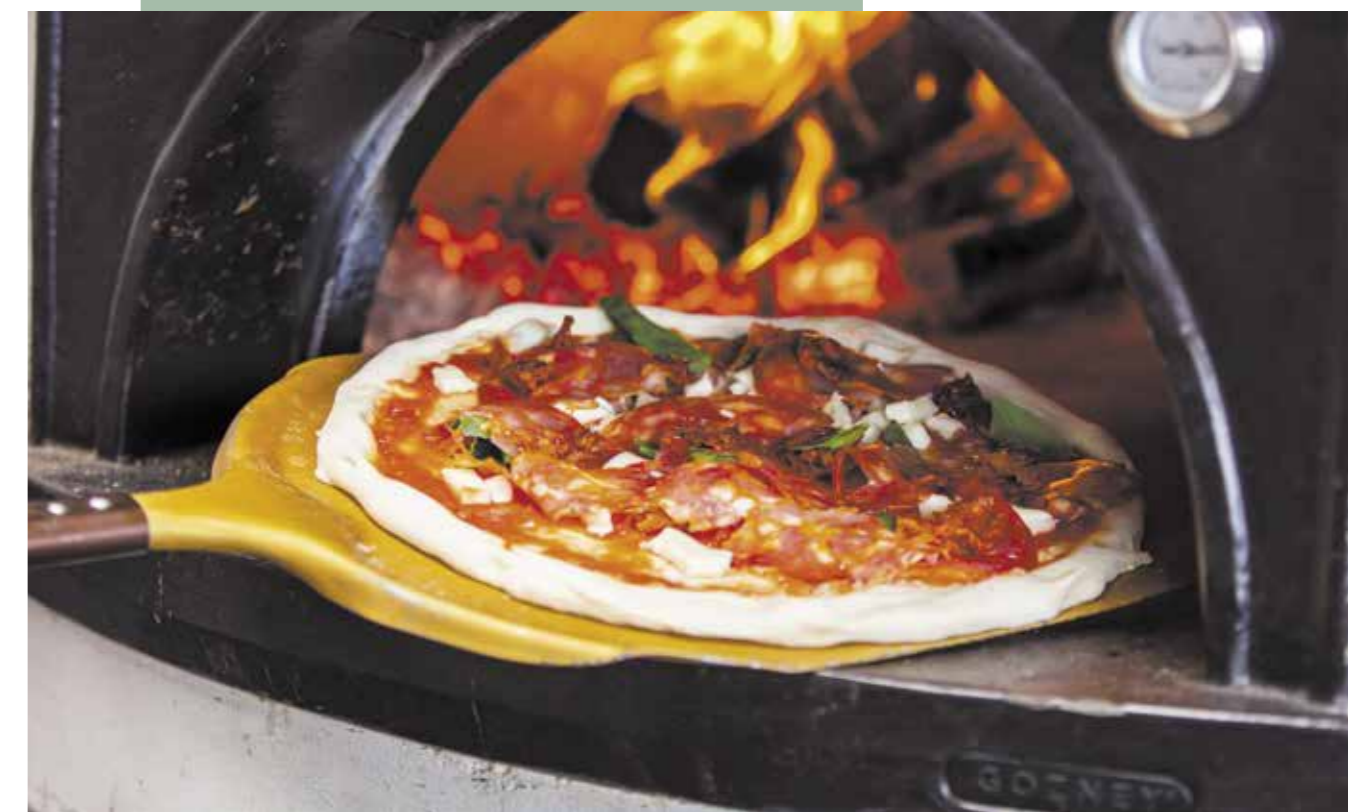


Flourish Craft Bakery



Flourish

Cafe Bianco



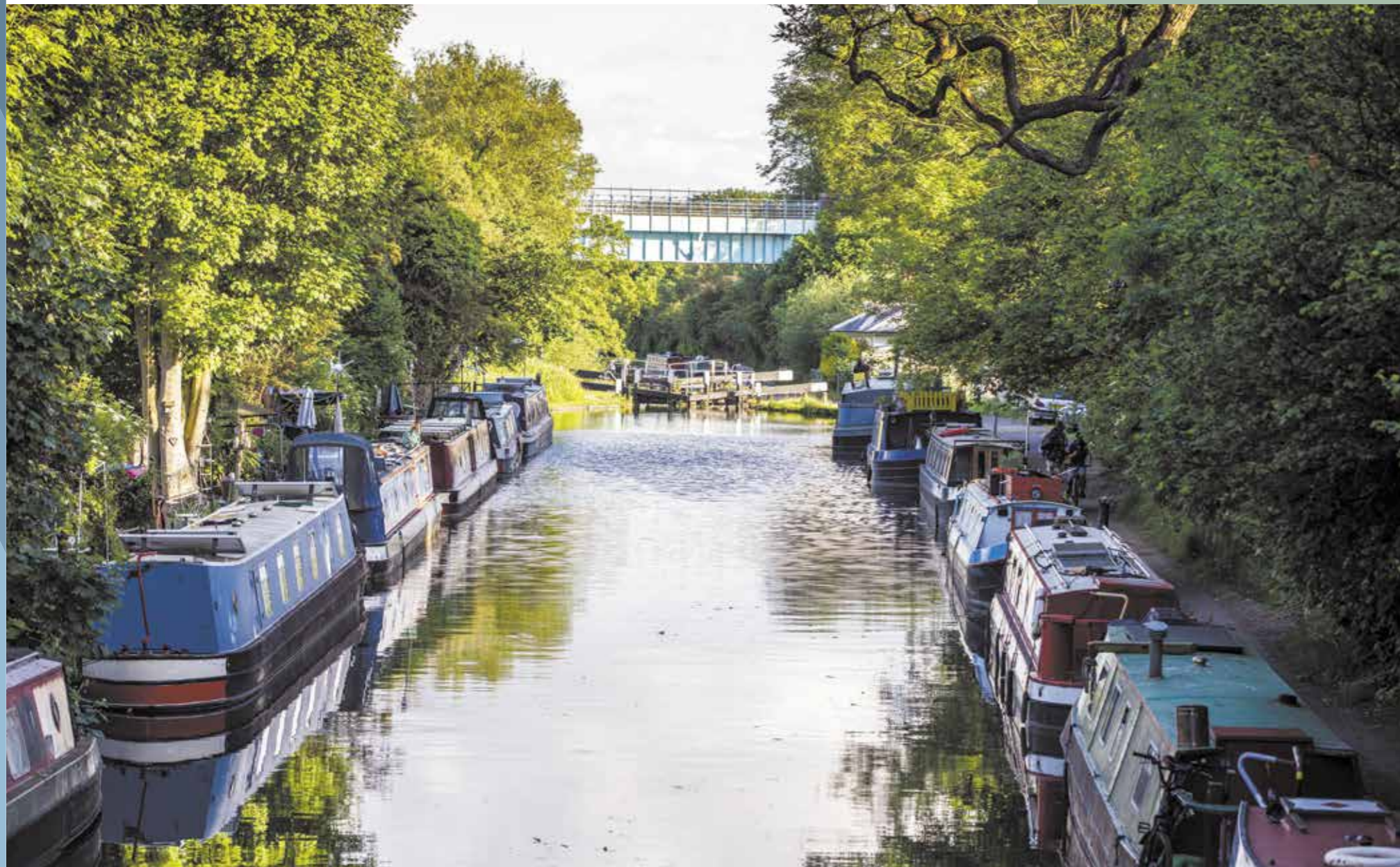
EXPLORING YOUR SURROUNDINGS

RATED THE HAPPIEST PLACE TO LIVE IN THE EAST OF ENGLAND.



CASSIOBURY PARK IS ONE OF WATFORD'S MOST POPULAR DESTINATIONS ATTRACTING 800,000 VISITORS A YEAR.

Cassiobury Park



Grand Union Canal

HOME TO MORE THAN 300 LISTED BUILDINGS AND MORE THAN 300 HECTARES OF PUBLIC OPEN SPACES.



The Grove Hotel & Golf Resort

With an outstanding selection of parks and playgrounds nearby, there is plenty of outdoor fun for children and adults.

Within your new home you will find a private gymnasium for all your workout needs. For those of you who also enjoy exercising in the great outdoors, there are eight green parks within walking distance. There are six great tennis courts in Cassiobury Park and a championship golf course at The Grove as well as 15 other courses within ten miles. And for those who simply enjoy a stroll, there is beautiful countryside all around.

Keen cyclists and hikers have easy access to the Chiltern Hills, an area of outstanding natural beauty which stretches through Hertfordshire, Buckinghamshire, Bedfordshire and Oxfordshire. The picturesque villages of the Chilterns provide a welcome break and plenty of country pubs for refreshments.



A GOLFER'S PARADISE WITH 77 COURSES IN THE COUNTY.

DINE, DRINK AND DISCOVER



The Florist

A great mix of nightlife can be found just five minutes walk away from The Clarendon hosting a variety of bars and restaurants.

Faborje Bar and Grill serves delicious Mediterranean food and Las Iguanas is a great Latin American Restaurant with an atmosphere to match. The Florist is renowned for its beautiful space, wonderful food and cocktails. For those who enjoy the finer dining experiences, Hertfordshire boasts 8 Michelin-starred restaurants.

Whether it is an evening of culture or tasting cuisines from around the globe, you will find a variety of options nearby.



For an evening at the local theatre, residents can choose from either the Palace Theatre or the Pump House Theatre, where you can enjoy performances ranging from pantomime to Shakespeare.

For larger shows there is The Colosseum, which has hosted world-class musicians, comedians and international sports events.



Palace Theatre

HERTFORDSHIRE BOASTS
8 MICHELIN-STARRED
RESTAURANTS.

THE BEST IN EDUCATION

LOCATED IN THE HEART OF THE GOLDEN TRIANGLE. CENTRED BETWEEN OXFORD, CAMBRIDGE AND LONDON.



The SOLARDOME at Watford Grammar School for Girls



The library at King's College London



The Clarendon has the highest quality primary and secondary education within walking distance and some of the finest universities in the world within easy reach.

Sitting within the Golden Triangle of elite British universities – Loxbridge, Watford is perfectly placed for London, Oxford and Cambridge.

Goldsmiths
UNIVERSITY OF LONDON

UCL

ual: central saint martins

Imperial College London

REGENT'S
UNIVERSITY LONDON
London's Independent University

UNIVERSITY OF WESTMINSTER

KING'S
College
LONDON

ual: university of the arts london
london college of fashion

LSE

London is proud to be a leader in educational excellence. It is home to several internationally renowned universities including the London School of Economics, Birkbeck University, Imperial College, University College (UCL) and King's College. UCL and Birkbeck are conveniently located a short distance from Euston Station.

Close to The Clarendon are St John's Primary School and Central Primary School, Watford Grammar School for Boys and Watford Grammar School for Girls which are both rated as outstanding in education by Ofsted. Senior schools in the area include Queens' and Bushey Meads.

West Herts College in Watford offers higher education in a range of courses including Law, Media, Business and Management, Graphic Design and Advertising and Marketing. It has a Teaching Excellence Framework rating of Silver.

THE UK IS HOME TO FOUR OF THE TOP TEN UNIVERSITIES IN THE WORLD.

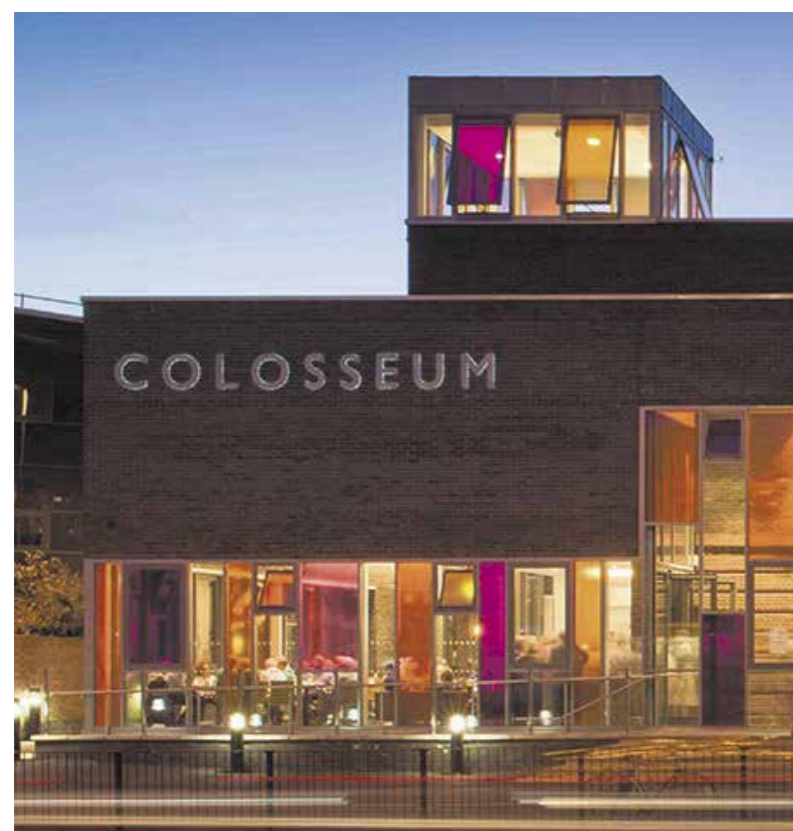
King's College London



REGENERATION: INVESTING IN A THRIVING FUTURE



WATFORD IS UNDERGOING OVER £1.5BILLION OF INVESTMENT IN THE NEXT 10 YEARS.



Watford is currently undergoing a large regeneration having already completed Atria Watford shopping mall, transport upgrades and more. Watford Borough Council plans to invest more than £1.5 billion over the next 10 to 15 years with the aim of creating thousands of new homes and jobs, improving local services, transport infrastructure and leisure services.

This investment is already attracting large companies. Watford is home to Premiership Football Club, Watford FC, the head offices of T.K. Maxx, Ralph Lauren and PricewaterhouseCoopers, who opened a new 600-person office in December 2020. This joins another world class accountancy business, KPMG, which has a long-established office with some 800 staff.

Clarendon Road, where The Clarendon is located, has already benefitted from some of this investment, with upgraded carriageway and footways and the installation of more attractive outdoor furniture and streetlamps.

This ongoing investment is set to have a positive impact on the values of property in the area, particularly those centrally located.



AT THE CENTRE OF IT ALL



RESTAURANTS

- 1 L'artista
- 2 Barracuda
- 3 Sushi No Mai
- 4 Roti Pan Kitchen
- 5 Yo Sushi
- 6 Kokoro
- 7 Las Iguanas
- 8 Côte Brasserie
- 9 Cassio Lounge
- 10 The Florist
- 11 Joe and the Juice
- 12 BloomsYard
- 13 Wagamama



TRAVEL

- Watford Junction (Overground and National Rail)
- Watford High Street (Overground)
- Watford Station (Underground Metropolitan Line)

CULTURE AND ENTERTAINMENT

- atria Watford
- Watford Palace Theatre
- Watford Market
- Rock Up (climbing centre)
- Watford Skatepark
- Waterfields Recreation Grounds
- Watford FC



SCHOOLS

- A St John's Church of England Primary School
- B Central Primary School





THE DEVELOPMENT

LANDMARK LIVING AT THE CLARENDON

At 25-storeys tall, The Clarendon is a new landmark providing an impressive profile within the skyline. The architecture and interior will be a high-end design reflecting today's modern living.

The development will house 168 exquisitely designed private apartments including a variety of studio, one and two bed apartments and a selection of penthouses.

Within the wider development is up to 130,000sqft of Grade A office space and a cafe for residents to enjoy.

168 EXQUISITELY DESIGNED APARTMENTS.



CGI is indicative only



CGI is indicative only

EXCEPTIONAL FACILITIES



CGI is indicative only

7th Floor Roof Terrace



CGI is indicative only

Residents Concierge

The Clarendon offers two breath-taking sky gardens, on the 7th and 25th floors, for private use along with state-of-the-art facilities including gymnasium, cinema, club lounge and cafe. Residents will also benefit from 24-hour concierge service, cycle storage for each apartment and underground parking (by separate negotiations).



Photo is indicative only

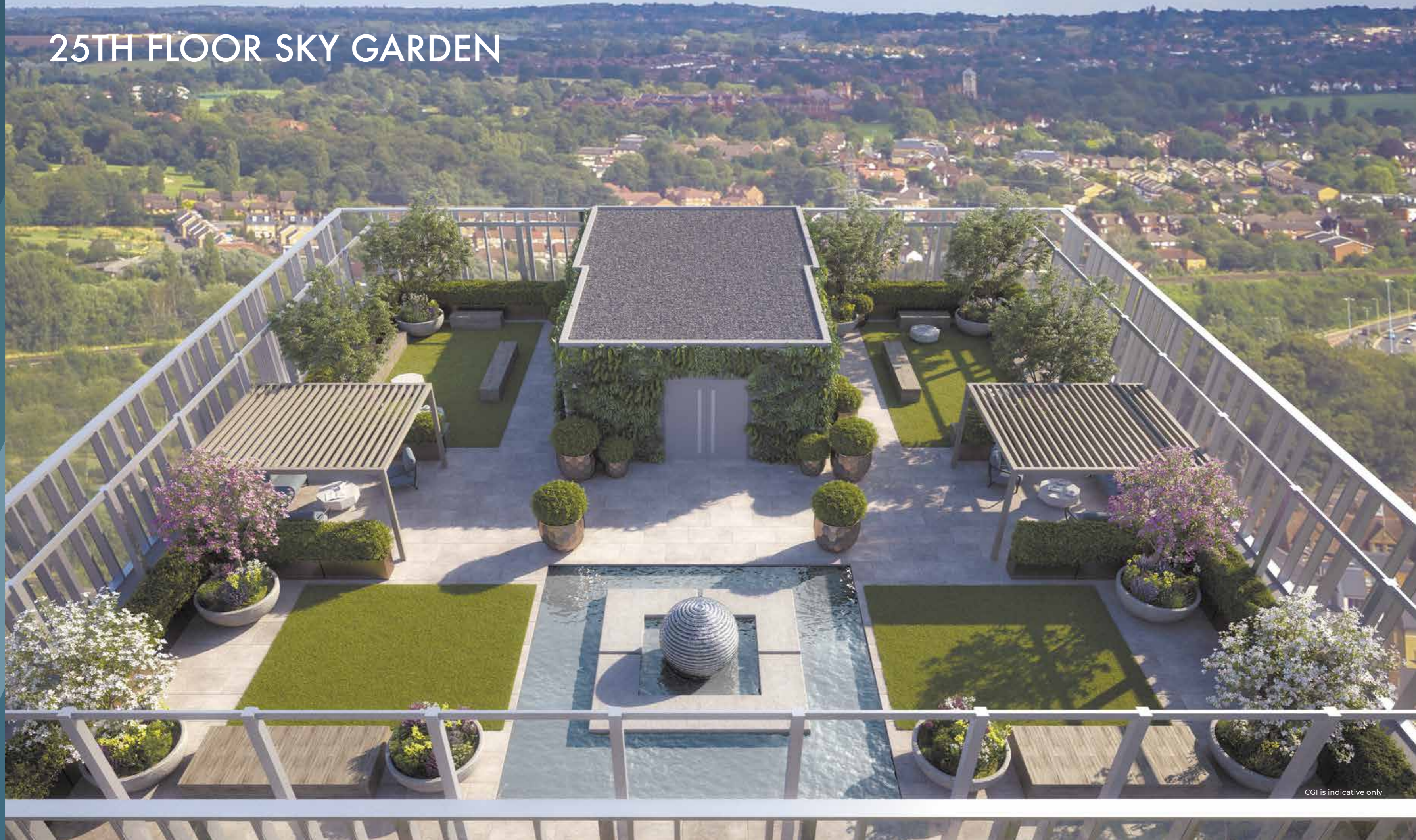
Cinema Room



Photo is indicative only

Residents Gymnasium

25TH FLOOR SKY GARDEN



CGI is indicative only

BEAUTIFULLY DESIGNED FOR MODERN LIVING



The development comprises of a variety of studio, one and two bed apartments and a selection of penthouses. Each apartment is impeccably designed with a selection of high quality materials and a playful colour palette.



CGI is indicative only

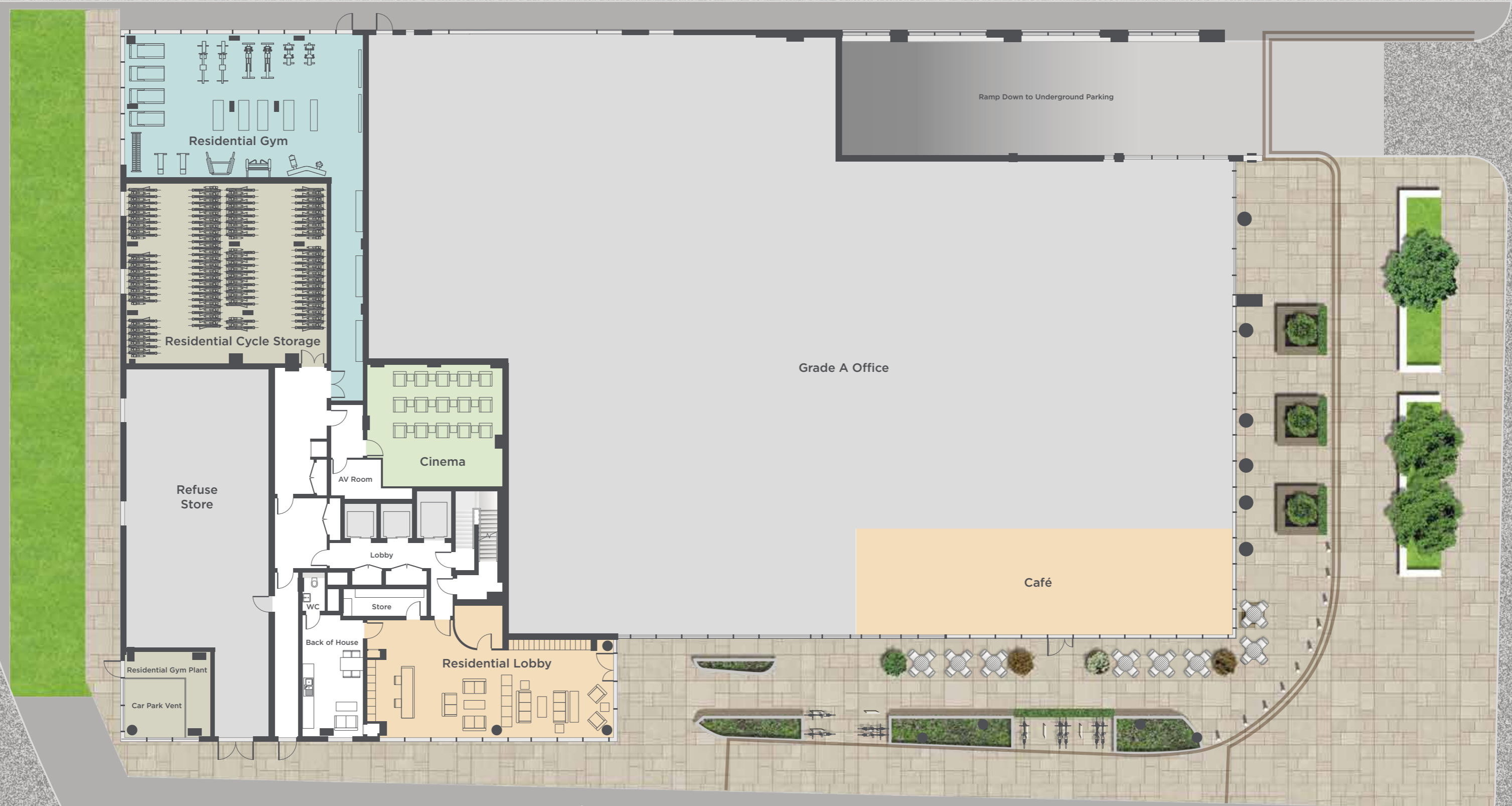


FLOORPLANS

GROUND FLOOR



Watford Junction

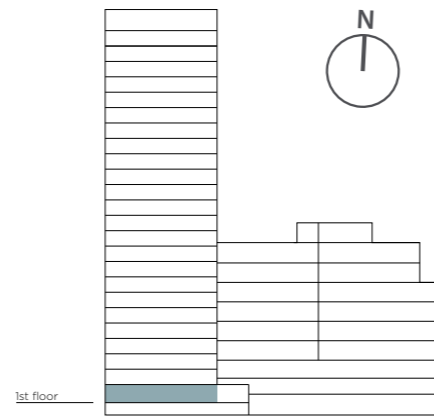


Clarendon Road

Town Centre

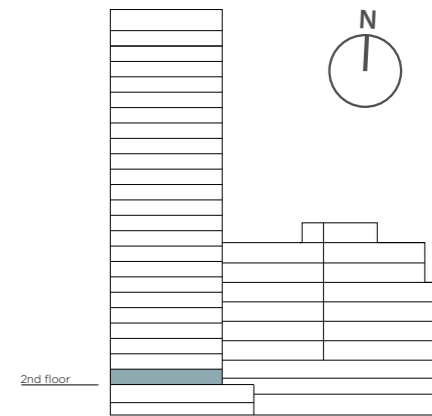
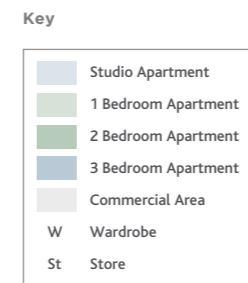


FLOOR 1



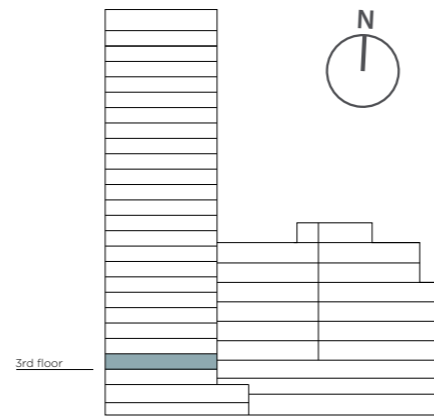
Apartment 1.1	Kitchen/Living/ Dining Bedroom Bathroom Total Internal Area	3.85m x 8.64m 2.75m x 4.96m 2.20m x 2.00m 59.58 sqm	12'7" x 28'4" 9'0" x 16'3" 7'2" x 6'6" 641 sqft
Apartment 1.2	Kitchen/Living/Dining Bedroom 1 Bedroom 2 Bathroom Ensuite Total Internal Area	7.82m x 4.67m 3.45m x 4.54m 3.45m x 3.36m 2.00m x 2.20m 2.20m x 1.50m 81.99 sqm	25'8" x 15'4" 11'4" x 14'11" 11'0" x 11'4" 6'6" x 7'2" 7'2" x 4'11" 883 sqft
Apartment 1.3	Kitchen/Living/ Dining Bedroom Bathroom Total Internal Area	4.52m x 3.70m 5.60m x 3.70m 2.00m x 1.95m 37.54 sqm	14'10" x 12'11" 18'4" x 12'1" 6'6" x 6'5" 404 sqft
Apartment 1.4	Kitchen/Living/ Dining Bedroom Bathroom Total Internal Area	4.52m x 3.70m 5.60m x 3.70m 2.00m x 1.95m 37.54 sqm	14'10" x 12'11" 18'4" x 12'1" 6'6" x 6'5" 404 sqft
Apartment 1.5	Kitchen/Living/ Dining Bedroom Bathroom Total Internal Area	4.52m x 3.70m 5.60m x 3.70m 2.00m x 1.95m 37.54 sqm	14'10" x 12'11" 18'4" x 12'1" 6'6" x 6'5" 404 sqft
Apartment 1.6	Kitchen/Living/ Dining Bedroom Bathroom Total Internal Area	6.14m x 3.75m 5.87m x 3.75m 2.00m x 1.95m 45.17 sqm	20'2" x 12'3" 19'3" x 12'3" 6'6" x 6'5" 486.2 sqft
Apartment 1.7	Kitchen/Living/ Dining Bedroom Bathroom Total Internal Area	6.14m x 3.75m 5.87m x 3.75m 2.00m x 1.95m 45.17 sqm	20'2" x 12'3" 19'3" x 12'3" 6'6" x 6'5" 486.2 sqft
Apartment 1.8	Kitchen/Living/ Dining Bedroom Bathroom Total Internal Area	6.14m x 3.75m 5.87m x 3.75m 2.00m x 1.95m 45.17 sqm	20'2" x 12'3" 19'3" x 12'3" 6'6" x 6'5" 486.2sqft
Apartment 1.9	Kitchen/Living/ Dining Bedroom Bathroom Total Internal Area	6.14m x 3.75m 5.87m x 3.75m 2.00m x 1.95m 45.17 sqm	20'2" x 12'3" 19'3" x 12'3" 6'6" x 6'5" 486.2 sqft
Apartment 1.10	Kitchen/Living/ Dining Bedroom Bathroom Total Internal Area	6.14m x 3.75m 5.87m x 3.75m 2.00m x 1.95m 45.17 sqm	20'2" x 12'3" 19'3" x 12'3" 6'6" x 6'5" 486.2 sqft
Apartment 1.11	Kitchen/Living/Dining Bedroom Bathroom Total Internal Area	6.14m X 3.99m 5.87m x 3.99m 2.00m x 1.95m 48.05 sqm	20'2" X 13'1" 19'3" x 13'1" 6'6" x 6'5" 517.2 sqft

FLOOR 2



Apartment 2.1	Kitchen/Living/Dining Bedroom Bathroom Total Internal Area	6.84m x 8.64m 4.04m x 3.03m 2.20m x 2.00m 60.41 sqm	22'5" x 28'4" 13'3" x 9'11" 7'2" x 6'6" 650.2 sqft
Apartment 2.2	Kitchen/Living/Dining Bedroom 1 Bedroom 2 Bathroom Ensuite Total Internal Area	7.82m x 4.67m 3.45m x 4.54m 3.45m x 3.36m 2.20m x 2.00m 2.20m x 1.50m 81.99 sqm	25'8" x 15'4" 11'4" x 14'11" 11'0" x 11'4" 7'2" x 6'6" 7'2" x 4'11" 882.5 sqft
Apartment 2.3	Kitchen/Living/ Dining Bedroom Bathroom Total Internal Area	4.52m x 3.70m 5.60m x 3.70m 2.00m x 1.95m 37.54 sqm	14'10" x 12'11" 18'4" x 12'1" 6'6" x 6'5" 404 sqft
Apartment 2.4	Kitchen/Living/ Dining Bedroom Bathroom Total Internal Area	4.52 x 3.70 5.60m x 3.70m 2.00m x 1.95m 37.54 sqm	14'10 x 12'11 18'4" x 12'1" 6'6" x 6'5" 404 sqft
Apartment 2.5	Kitchen/Living/ Dining Bedroom Bathroom Total Internal Area	4.52m x 3.70m 5.60m x 3.70m 2.00m x 1.95m 37.54 sqm	14'10" x 12'11" 18'4" x 12'1" 6'6" x 6'5" 404 sqft
Apartment 2.6	Kitchen/Living/ Dining Bedroom Bathroom Total Internal Area	6.14m x 3.75m 5.87m x 3.75m 2.00m x 1.95m 45.17 sqm	20'2" x 12'3" 19'3" x 12'3" 6'6" x 6'5" 486.2 sqft
Apartment 2.7	Kitchen/Living/ Dining Bedroom Bathroom Total Internal Area	6.14m x 3.75m 5.87m x 3.75m 2.00m x 1.95m 45.17 sqm	20'2" x 12'3" 19'3" x 12'3" 6'6" x 6'5" 486.2 sqft
Apartment 2.8	Kitchen/Living/ Dining Bedroom Bathroom Total Internal Area	6.14m x 3.75m 5.87m x 3.75m 2.00m x 1.95m 45.17 sqm	20'2" x 12'3" 19'3" x 12'3" 6'6" x 6'5" 486.2 sqft
Apartment 2.9	Kitchen/Living/ Dining Bedroom Bathroom Total Internal Area	6.14m x 3.75m 5.87m x 3.75m 2.00m x 1.95m 45.17 sqm	20'2" x 12'3" 19'3" x 12'3" 6'6" x 6'5" 486.2 sqft
Apartment 2.10	Kitchen/Living/ Dining Bedroom Bathroom Total Internal Area	6.14m x 3.75m 5.87m x 3.75m 2.00m x 1.95m 45.17 sqm	20'2" x 12'3" 19'3" x 12'3" 6'6" x 6'5" 486.2 sqft
Apartment 2.11	Kitchen/Living/ Dining Bedroom Bathroom Total Internal Area	6.14m x 3.99m 5.87m x 3.99m 2.00m x 1.95m 48.05 sqm	20'2" X 13'1" 19'3" x 13'1" 6'6" x 6'5" 517.2 sqft

FLOOR 3



Apartment 3.1

Kitchen/Living/Dining	6.84m x 8.64m	22'5" x 28'4"
Bedroom	4.04m x 3.03m	13'3" x 9'11"
Bathroom	2.20m x 2.00m	7'2" x 6'6"
Total Internal Area	60.41 sqm	650.2 sqft

Apartment 3.2

Kitchen/Living/Dining	7.82m x 4.67m	25'8" x 15'4"
Bedroom 1	3.45m x 4.54m	11'4" x 14'11"
Bedroom 2	3.45m x 3.36m	11'0" x 11'4"
Bathroom	2.20m x 2.00m	7'2" x 6'6"
Ensuite	2.20m x 1.50m	7'2" x 4'11"
Total Internal Area	81.99 sqm	882.5 sqft

Apartment 3.3

Kitchen/Living/ Dining	4.52m x 3.70m	14'10" x 12'11"
Bedroom	5.60m x 3.70m	18'4" x 12'1"
Bathroom	2.00m x 1.95m	6'6" x 6'5"
Total Internal Area	37.54 sqm	404 sqft

Apartment 3.4

Kitchen/Living/ Dining	4.52 x 3.70	14'10" x 12'11"
Bedroom	5.60m x 3.70m	18'4" x 12'1"
Bathroom	2.00m x 1.95m	6'6" x 6'5"
Total Internal Area	37.54 sqm	404 sqft

Apartment 3.5

Kitchen/Living/ Dining	4.52m x 3.70m	14'10" x 12'11"
Bedroom	5.60m x 3.70m	18'4" x 12'1"
Bathroom	2.00m x 1.95m	6'6" x 6'5"
Total Internal Area	37.54 sqm	404 sqft

Apartment 3.6

Kitchen/Living/ Dining	6.14m x 3.75m	20'2" x 12'3"
Bedroom	5.87m x 3.75m	19'3" x 12'3"
Bathroom	2.00m x 1.95m	6'6" x 6'5"
Total Internal Area	45.17 sqm	486.2 sqft

Apartment 3.7

Kitchen/Living/ Dining	6.14m x 3.75m	20'2" x 12'3"
Bedroom	5.87m x 3.75m	19'3" x 12'3"
Bathroom	2.00m x 1.95m	6'6" x 6'5"
Total Internal Area	45.17 sqm	486.2 sqft

Apartment 3.8

Kitchen/Living/ Dining	6.14m x 3.75m	20'2" x 12'3"
Bedroom	5.87m x 3.75m	19'3" x 12'3"
Bathroom	2.00m x 1.95m	6'6" x 6'5"
Total Internal Area	45.17 sqm	486.2 sqft

Apartment 3.9

Kitchen/Living/ Dining	6.14m x 3.75m	20'2" x 12'3"
Bedroom	5.87m x 3.75m	19'3" x 12'3"
Bathroom	2.00m x 1.95m	6'6" x 6'5"
Total Internal Area	45.17 sqm	486.2 sqft

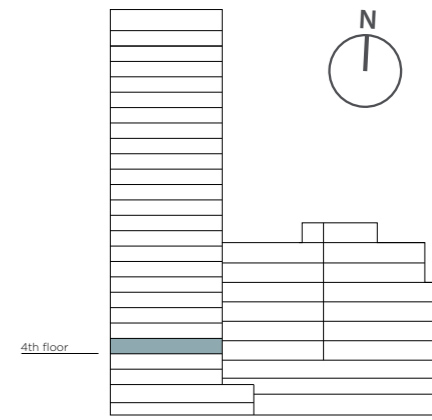
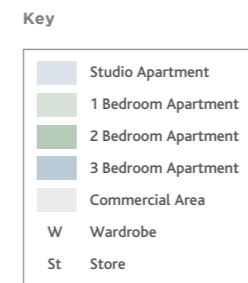
Apartment 3.10

Kitchen/Living/ Dining	6.14m x 3.75m	20'2" x 12'3"
Bedroom	5.87m x 3.75m	19'3" x 12'3"
BBathroom	2.00m x 1.95m	6'6" x 6'5"
Total Internal Area	45.17 sqm	486.2 sqft

Apartment 3.11

Kitchen/Living/ Dining	6.14m x 3.99m	20'2" x 13'11"
Bedroom	5.87m x 3.99m	19'3" x 13'11"
Bathroom	2.00m x 1.95m	6'6" x 6'5"
Total Internal Area	48.05 sqm	517.2 sqft

FLOOR 4



Apartment 4.1

Kitchen/Living/Dining	6.84m x 8.64m	22'5" x 28'4"
Bedroom	4.04m x 3.03m	13'3" x 9'11"
Bathroom	2.20m x 2.00m	7'2" x 6'6"
Total Internal Area	60.41 sqm	650.2 sqft

Apartment 4.2

Kitchen/Living/Dining	7.82m x 4.67m	25'8" x 15'4"
Bedroom 1	3.45m x 4.54m	11'4" x 14'11"
Bedroom 2	3.45m x 3.36m	11'0" x 11'4"
Bathroom	2.20m x 2.00m	7'2" x 6'6"
Ensuite	2.20m x 1.50m	7'2" x 4'11"
Total Internal Area	81.99 sqm	882.5 sqft

Apartment 4.3

Kitchen/Living/ Dining	4.52m x 3.70m	14'10" x 12'11"
Bedroom	5.60m x 3.70m	18'4" x 12'1"
Bathroom	2.00m x 1.95m	6'6" x 6'5"
Total Internal Area	37.54 sqm	404 sqft

Apartment 4.4

Kitchen/Living/ Dining	4.52 x 3.70	14'10" x 12'11"
Bedroom	5.60m x 3.70m	18'4" x 12'1"
Bathroom	2.00m x 1.95m	6'6" x 6'5"
Total Internal Area	37.54 sqm	404 sqft

Apartment 4.5

Kitchen/Living/ Dining	4.52m x 3.70m	14'10" x 12'11"
Bedroom	5.60m x 3.70m	18'4" x 12'1"
Bathroom	2.00m x 1.95m	6'6" x 6'5"
Total Internal Area	37.54 sqm	404 sqft

Apartment 4.6

Kitchen/Living/ Dining	6.14m x 3.75m	20'2" x 12'3"
Bedroom	5.87m x 3.75m	19'3" x 12'3"
Bathroom	2.00m x 1.95m	6'6" x 6'5"
Total Internal Area	45.17 sqm	486.2 sqft

Apartment 4.7

Kitchen/Living/ Dining	6.14m x 3.75m	20'2" x 12'3"
Bedroom	5.87m x 3.75m	19'3" x 12'3"
Bathroom	2.00m x 1.95m	6'6" x 6'5"
Total Internal Area	45.17 sqm	486.2 sqft

Apartment 4.8

Kitchen/Living/ Dining	6.14m x 3.75m	20'2" x 12'3"
Bedroom	5.87m x 3.75m	19'3" x 12'3"
Bathroom	2.00m x 1.95m	6'6" x 6'5"
Total Internal Area	45.17 sqm	486.2 sqft

Apartment 4.9

Kitchen/Living/ Dining	6.14m x 3.75m	20'2" x 12'3"
Bedroom	5.87m x 3.75m	19'3" x 12'3"
Bathroom	2.00m x 1.95m	6'6" x 6'5"
Total Internal Area	45.17 sqm	486.2 sqft

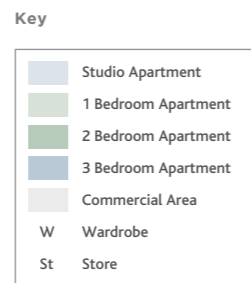
Apartment 4.10

Kitchen/Living/ Dining	6.14m x 3.75m	20'2" x 12'3"
Bedroom	5.87m x 3.75m	19'3" x 12'3"
Bathroom	2.00m x 1.95m	6'6" x 6'5"
Total Internal Area	45.17 sqm	486.2 sqft

Apartment 4.11

Kitchen/Living/ Dining	6.14m x 3.99m	20'2" x 13'11"
Bedroom	5.87m x 3.99m	19'3" x 13'11"
Bathroom	2.00m x 1.95m	6'6" x 6'5"
Total Internal Area	48.05 sqm	517.2 sqft

FLOOR 5



Apartment 5.1

Kitchen/Living/Dining	6.84m x 8.64m	22'5" x 28'4"
Bedroom	4.04m x 3.03m	13'3" x 9'11"
Bathroom	2.20m x 2.00m	7'2" x 6'6"
Total Internal Area	60.41 sqm	650.2 sqft

Apartment 5.2

Kitchen/Living/Dining	7.82m x 4.67m	25'8" x 15'4"
Bedroom 1	3.45m x 4.54m	11'4" x 14'11"
Bedroom 2	3.45m x 3.36m	11'0" x 11'4"
Bathroom	2.20m x 2.00m	7'2" x 6'6"
Ensuite	2.20m x 1.50m	7'2" x 4'11"
Total Internal Area	81.99 sqm	882.5 sqft

Apartment 5.3

Kitchen/Living/ Dining	4.52m x 3.70m	14'10" x 12'11"
Bedroom	5.60m x 3.70m	18'4" x 12'1"
Bathroom	2.00m x 1.95m	6'6" x 6'5"
Total Internal Area	37.54 sqm	404 sqft

Apartment 5.4

Kitchen/Living/ Dining	4.52 x 3.70	14'10" x 12'11"
Bedroom	5.60m x 3.70m	18'4" x 12'1"
Bathroom	2.00m x 1.95m	6'6" x 6'5"
Total Internal Area	37.54 sqm	404 sqft

Apartment 5.5

Kitchen/Living/ Dining	4.52m x 3.70m	14'10" x 12'11"
Bedroom	5.60m x 3.70m	18'4" x 12'1"
Bathroom	2.00m x 1.95m	6'6" x 6'5"
Total Internal Area	37.54 sqm	404 sqft

Apartment 5.6

Kitchen/Living/ Dining	6.14m x 3.75m	20'2" x 12'3"
Bedroom	5.87m x 3.75m	19'3" x 12'3"
Bathroom	2.00m x 1.95m	6'6" x 6'5"
Total Internal Area	45.17 sqm	486.2 sqft

Apartment 5.7

Kitchen/Living/ Dining	6.14m x 3.75m	20'2" x 12'3"
Bedroom	5.87m x 3.75m	19'3" x 12'3"
Bathroom	2.00m x 1.95m	6'6" x 6'5"
Total Internal Area	45.17 sqm	486.2 sqft

Apartment 5.8

Kitchen/Living/ Dining	6.14m x 3.75m	20'2" x 12'3"
Bedroom	5.87m x 3.75m	19'3" x 12'3"
Bathroom	2.00m x 1.95m	6'6" x 6'5"
Total Internal Area	45.17 sqm	486.2 sqft

Apartment 5.9

Kitchen/Living/ Dining	6.14m x 3.75m	20'2" x 12'3"
Bedroom	5.87m x 3.75m	19'3" x 12'3"
Bathroom	2.00m x 1.95m	6'6" x 6'5"
Total Internal Area	45.17 sqm	486.2 sqft

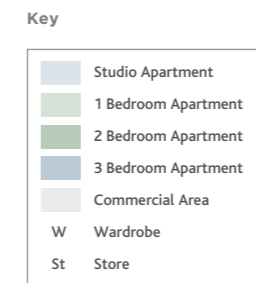
Apartment 5.10

Kitchen/Living/ Dining	6.14m x 3.75m	20'2" x 12'3"
Bedroom	5.87m x 3.75m	19'3" x 12'3"
Bathroom	2.00m x 1.95m	6'6" x 6'5"
Total Internal Area	45.17 sqm	486.2 sqft

Apartment 5.11

Kitchen/Living/ Dining	6.14m x 3.99m	20'2" x 13'1"
Bedroom	5.87m x 3.99m	19'3" x 13'1"
Bathroom	2.00m x 1.95m	6'6" x 6'5"
Total Internal Area	48.05 sqm	517.2 sqft

FLOOR 6



Apartment 6.1

Kitchen/Living/Dining	6.84m x 8.64m	22'5" x 28'4"
Bedroom	4.04m x 3.03m	13'3" x 9'11"
Bathroom	2.20m x 2.00m	7'2" x 6'6"
Total Internal Area	60.41 sqm	650.2 sqft

Apartment 6.2

Kitchen/Living/Dining	7.82m x 4.67m	25'8" x 15'4"
Bedroom 1	3.45m x 4.54m	11'4" x 14'11"
Bedroom 2	3.45m x 3.36m	11'0" x 11'4"
Bathroom	2.20m x 2.00m	7'2" x 6'6"
Ensuite	2.20m x 1.50m	7'2" x 4'11"
Total Internal Area	81.99 sqm	882.5 sqft

Apartment 6.3

Kitchen/Living/ Dining	4.52m x 3.70m	14'10" x 12'11"
Bedroom	5.60m x 3.70m	18'4" x 12'1"
Bathroom	2.00m x 1.95m	6'6" x 6'5"
Total Internal Area	37.54 sqm	404 sqft

Apartment 6.4

Kitchen/Living/ Dining	4.52 x 3.70	14'10" x 12'11"
Bedroom	5.60m x 3.70m	18'4" x 12'1"
Bathroom	2.00m x 1.95m	6'6" x 6'5"
Total Internal Area	37.54 sqm	404 sqft

Apartment 6.5

Kitchen/Living/ Dining	4.52m x 3.70m	14'10" x 12'11"
Bedroom	5.60m x 3.70m	18'4" x 12'1"
Bathroom	2.00m x 1.95m	6'6" x 6'5"
Total Internal Area	37.54 sqm	404 sqft

Apartment 6.6

Kitchen/Living/ Dining	6.14m x 3.75m	20'2" x 12'3"
Bedroom	5.87m x 3.75m	19'3" x 12'3"
Bathroom	2.00m x 1.95m	6'6" x 6'5"
Total Internal Area	45.17 sqm	486.2 sqft

Apartment 6.7

Kitchen/Living/ Dining	6.14m x 3.75m	20'2" x 12'3"
Bedroom	5.87m x 3.75m	19'3" x 12'3"
Bathroom	2.00m x 1.95m	6'6" x 6'5"
Total Internal Area	45.17 sqm	486.2 sqft

Apartment 6.8

Kitchen/Living/ Dining	6.14m x 3.75m	20'2" x 12'3"
Bedroom	5.87m x 3.75m	19'3" x 12'3"
Bathroom	2.00m x 1.95m	6'6" x 6'5"
Total Internal Area	45.17 sqm	486.2 sqft

Apartment 6.9

Kitchen/Living/ Dining	6.14m x 3.75m	20'2" x 12'3"
Bedroom	5.87m x 3.75m	19'3" x 12'3"
Bathroom	2.00m x 1.95m	6'6" x 6'5"
Total Internal Area	45.17 sqm	486.2 sqft

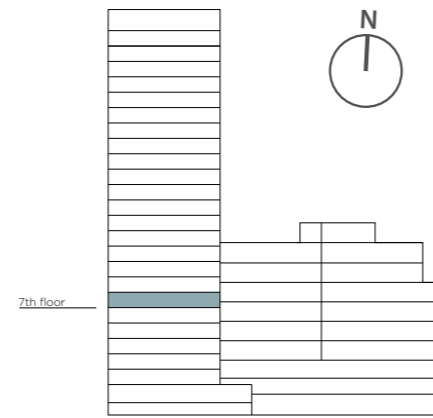
Apartment 6.10

Kitchen/Living/ Dining	6.14m x 3.75m	20'2" x 12'3"
Bedroom	5.87m x 3.75m	19'3" x 12'3"
Bathroom	2.00m x 1.95m	6'6" x 6'5"
Total Internal Area	45.17 sqm	486.2 sqft

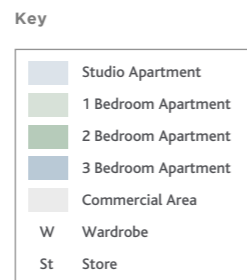
Apartment 6.11

Kitchen/Living/ Dining	6.14m x 3.99m	20'2" x 13'1"
Bedroom	5.87m x 3.99m	19'3" x 13'1"
Bathroom	2.00m x 1.95m	6'6" x 6'5"
Total Internal Area	48.05 sqm	517.2 sqft

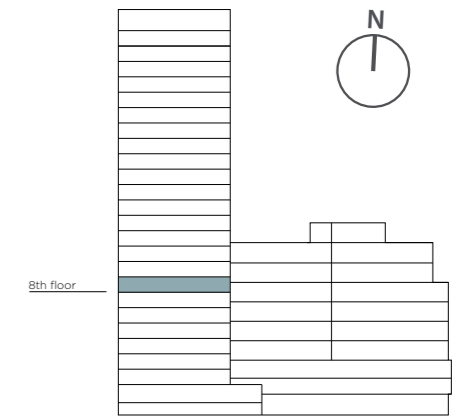
FLOOR 7



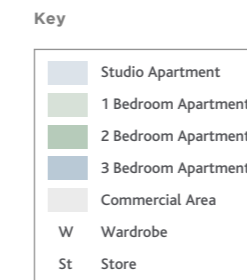
Apartment 7.1	Kitchen/Living/ Dining 6.84m X 8.57m Bedroom 4.04m X 3.03m Bathroom 2.20m X 2.00m Total Internal Area 60.41 sqm	22'5" X 28'11" 13'3" X 9'11" 7'2" X 6'6" 650.2 sqft
Apartment 7.2	Kitchen/Living/ Dining 3.91m X 7.32m Bedroom 2.85m X 4.04m Bathroom 2.00m X 2.20m Total Internal Area 53.26 sqm	12'10" X 24'0" 9'4" X 13'3" 6'6" X 7'2" 573.2 sqft
Apartment 7.3	Kitchen/Living/ Dining 7.34m x 6.50m Bedroom 1 3.94m x 4.62m Ensuite 2.20m x 1.50m Bedroom 2 3.45m X 3.29m Bathroom 2.00m x 2.20m Total Internal Area 80.27 sqm	24'1" x 21'4" 12'11" x 15'2" 7'2" x 4'11" 11'4" x 10'9" 6'6" x 7'2" 864 sqft
Apartment 7.4	Kitchen/Living/ Dining 8.01m x 3.97m Bedroom 4.37m x 3.05m Bathroom 2.00m x 2.20m Total Internal Area 50.96 sqm	26'3" x 13'0" 14'4" x 10'0" 6'6" x 7'2" 548.5 sqft
Apartment 7.5	Kitchen/Living/ Dining 4.71m x 5.17m Bedroom 3.71m x 3.21m Bathroom 2.10m x 2.36m Terrace 7.50m x 2.00m Total Internal Area 49.43 sqm	15'5" x 16'11" 12'2" x 10'6" 6'10" x 7'9" 24'6" x 6'5" 532 sqft
Apartment 7.6	Kitchen/Living/ Dining 6.70m x 4.99m Bedroom 3.20m x 3.22m Bathroom 2.00m x 2.20m Terrace 3.50m x 2.00m Total Internal Area 45.3 sqm	22'0" x 16'4" 10'6" x 10'7" 6'6" x 7'2" 11'4" x 6'5" 487.6 sqft



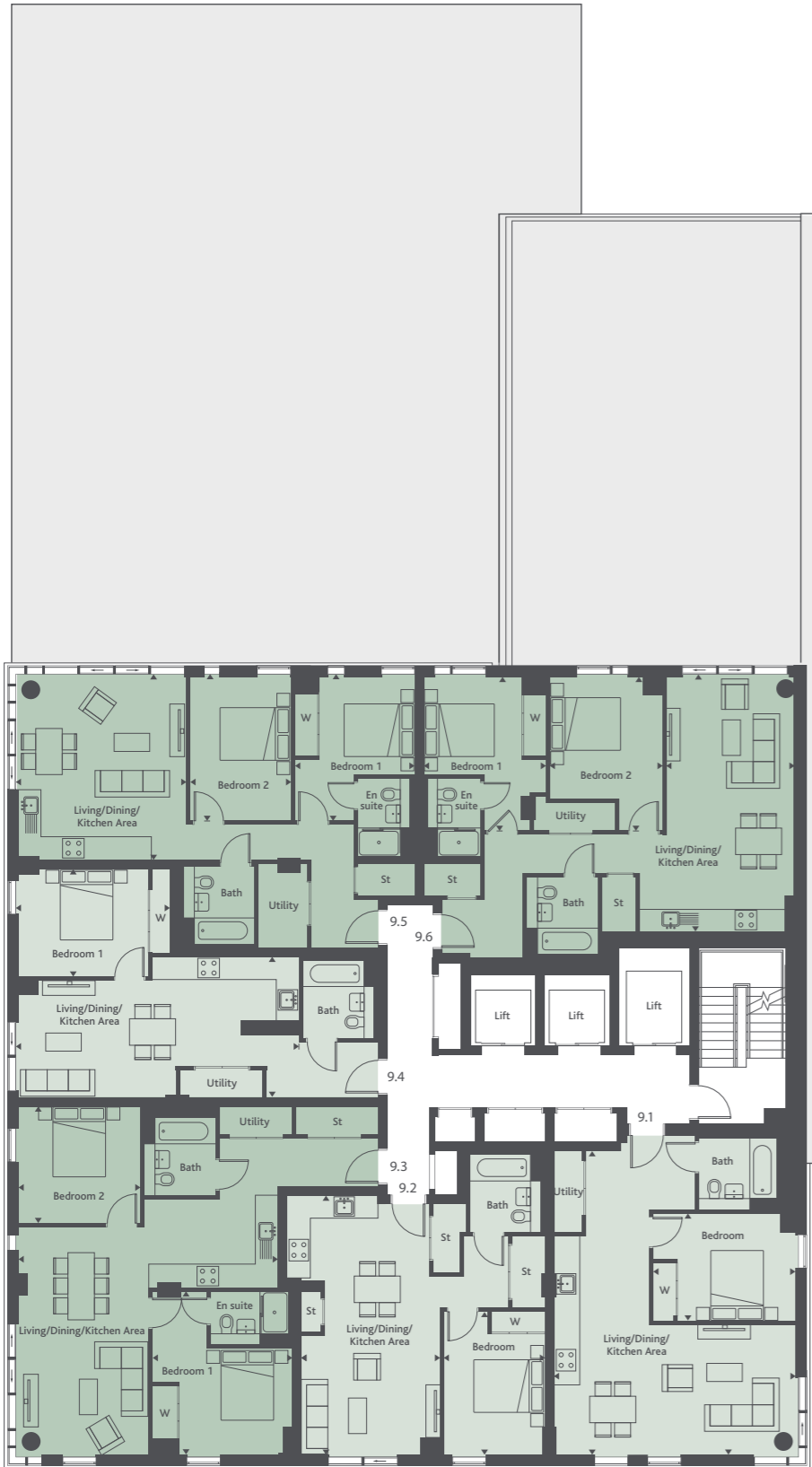
FLOOR 8



Apartment 8.1	Kitchen/Living/Dining 6.84m x 8.57m Bedroom 1 4.04m x 3.03m Bathroom 2.20m x 2.00m Total Internal Area 60.41 sqm	22'5" x 28'11" 13'3" x 9'11" 7'2" x 6'6" 650.2 sqft
Apartment 8.2	Kitchen/Living/Dining 3.90m x 7.25m Bedroom 1 4.04m x 2.85m Bathroom 2.20m x 2.00m Total Internal Area 53.26 sqm	12'10" x 23'9" 9'4" x 13'3" 7'2" x 6'6" 573.2 sqft
Apartment 8.3	Kitchen/Living/Dining 7.34m x 6.50m Bedroom 1 3.94m x 4.62m Ensuite 2.20m x 1.50m Bedroom 2 3.45m x 3.29m Bathroom 2.00m x 2.20m Total Internal Area 80.27 sqm	24'1" x 21'4" 12'11" x 15'2" 7'2" x 4'11" 11'4" x 10'9" 6'6" x 7'2" 864 sqft
Apartment 8.4	Kitchen/Living/Dining 8.01m x 3.97m Bedroom 1 4.37m x 3.05m Bathroom 2.00m x 2.20m Total Internal Area 50.96 sqm	26'3" x 13'0" 14'4" x 10'0" 6'6" x 7'2" 548.5 sqft
Apartment 8.5	Kitchen/Living/Dining 4.64m x 5.24m Bedroom 1 3.05m x 4.09m Bathroom 2.00m x 2.20m Total Internal Area 54.16 sqm	15'3" x 17'2" 10'0" x 13'5" 6'6" x 7'2" 582.9 sqft
Apartment 8.6	Kitchen/Living/Dining 8.47m x 4.99m Bedroom 1 3.76m x 3.21m Bathroom 2.00m x 2.20m Total Internal Area 55.01 sqm	27'9" x 16'4" 12'4" x 10'6" 6'6" x 7'2" 592.1 sqft

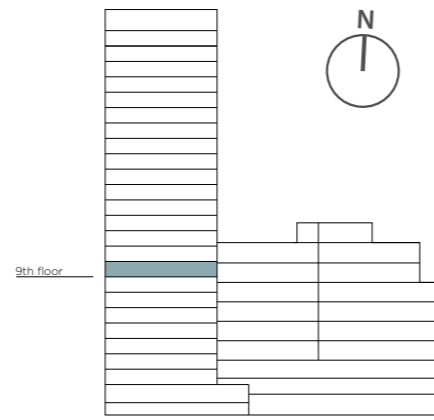


FLOOR 9



Key

	Studio Apartment
	1 Bedroom Apartment
	2 Bedroom Apartment
	3 Bedroom Apartment
	Commercial Area
W	Wardrobe
St	Store



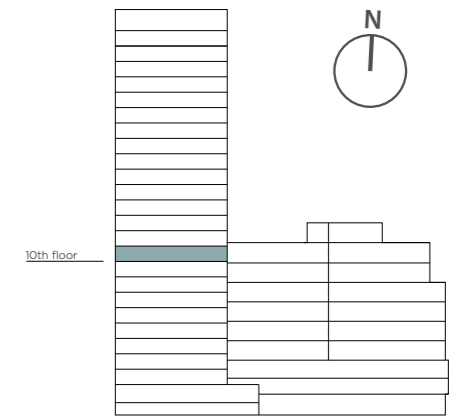
Apartment 9.1		
Kitchen/Living/Dining	6.84m x 8.57m	22'5" x 28'1"
Bedroom 1	4.04m x 3.03m	13'3" x 9'11"
Bathroom	2.20m x 2.00m	7'2" x 6'6"
Total Internal Area	60.41 sqm	650.2 sqft
Apartment 9.2		
Kitchen/Living/Dining	3.90m x 7.32m	12'10" x 24'0"
Bedroom 1	2.85m x 4.03m	9'4" x 13'3"
Bathroom	2.00m x 2.20m	6'6" x 7'2"
Total Internal Area	53.26 sqm	573.2 sqft
Apartment 9.3		
Kitchen/Living/Dining	7.34m x 6.50m	24'1" x 21'4"
Bedroom 1	3.94m x 4.62m	12'11" x 15'2"
Ensuite	2.20m x 1.50m	7'2" x 4'11"
Bedroom 2	3.45m x 3.29m	11'4" x 10'9"
Bathroom	2.00m x 2.20m	6'6" x 7'2"
Total Internal Area	80.27 sqm	864 sqft
Apartment 9.4		
Kitchen/Living/Dining	8.01m x 3.97m	26'3" x 13'0"
Bedroom 1	4.37m x 3.05m	14'4" x 10'0"
Bathroom	2.00m x 2.20m	6'6" x 7'2"
Total Internal Area	50.96 sqm	548.5 sqft
Apartment 9.5		
Kitchen/Living/Dining	4.81m x 5.24m	15'9" x 17'2"
Bedroom 1	3.38m x 4.14m	11'1" x 13'7"
Ensuite	1.50m x 2.20m	4'11" x 7'2"
Bedroom 2	2.85m x 4.14m	9'4" x 13'7"
Bathroom	2.00m x 2.20m	6'6" x 7'2"
Total Internal Area	72.67 sqm	782.2 sqft
Apartment 9.6		
Kitchen/Living/Dining	3.63m x 7.26m	11'11" x 23'10"
Bedroom 1	3.47m x 4.34m	11'4" x 14'3"
Ensuite	1.5m x 2.2m	4'11" x 7'2"
Bedroom 2	3.16m x 4.34m	10'4" x 14'3"
Bathroom	2.00m x 2.2m	6'6" x 7'2"
Total Internal Area	78.01 sqm	839.6 sqft

FLOOR 10



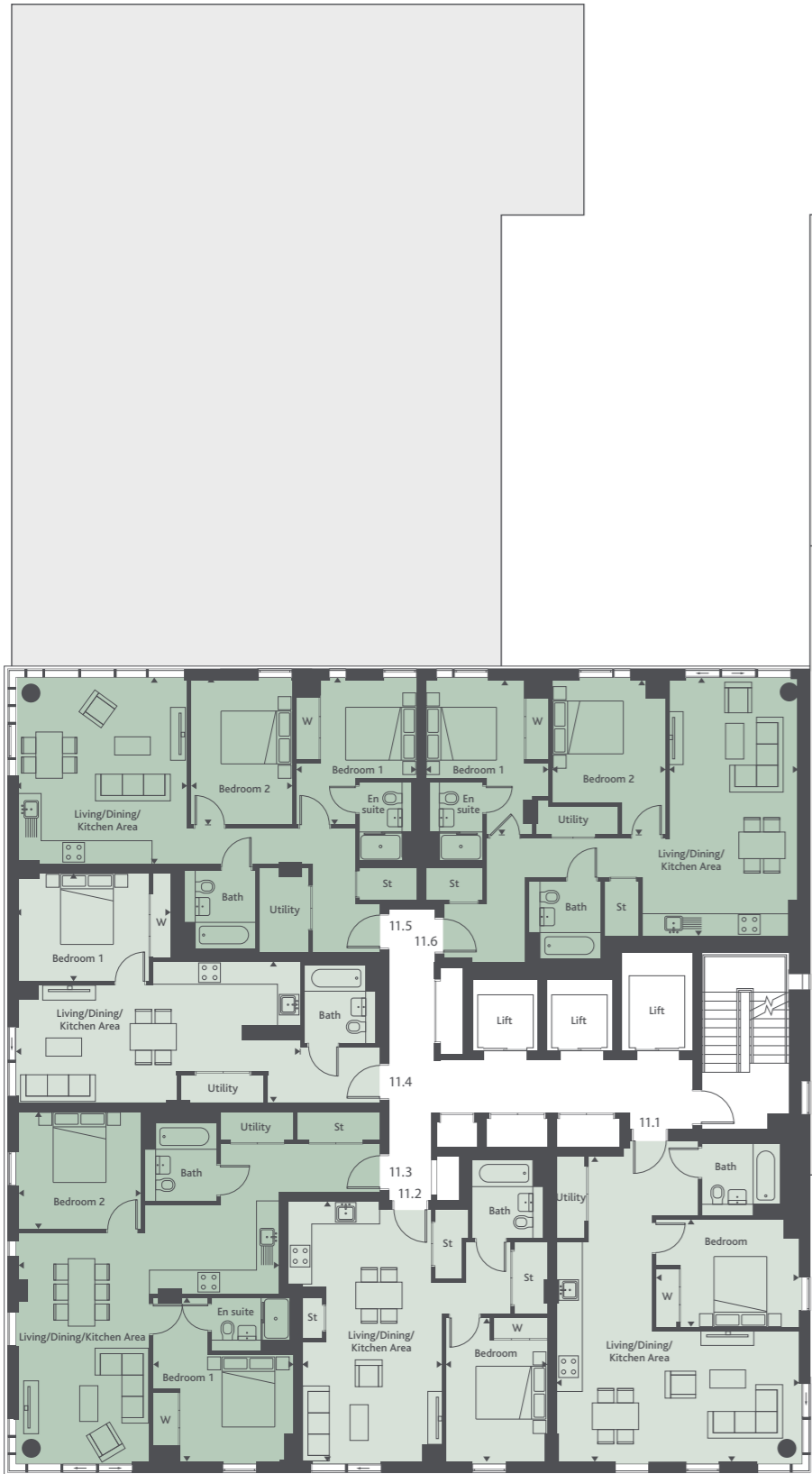
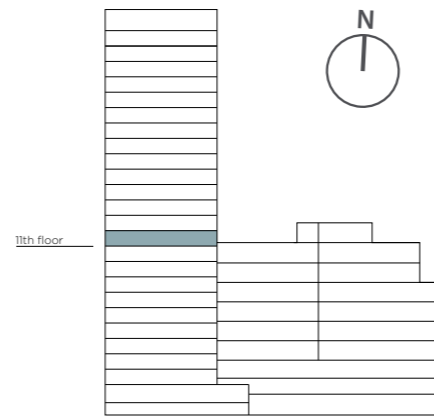
Key

	Studio Apartment
	1 Bedroom Apartment
	2 Bedroom Apartment
	3 Bedroom Apartment
	Commercial Area
W	Wardrobe
St	Store



Apartment 10.1		
Kitchen/Living/Dining	6.84m x 8.57m	22'5" x 28'1"
Bedroom 1	4.04m x 3.03m	13'3" x 9'11"
Bathroom	2.20m x 2.00m	7'2" x 6'6"
Total Internal Area	60.41 sqm	650.2 sqft
Apartment 10.2		
Kitchen/Living/Dining	3.90m x 7.32m	12'10" x 24'0"
Bedroom 1	2.85m x 4.03m	9'4" x 13'3"
Bathroom	2.00m x 2.20m	6'6" x 7'2"
Total Internal Area	53.26 sqm	573.2 sqft
Apartment 10.3		
Kitchen/Living/Dining	7.34m x 6.50m	24'1" x 21'4"
Bedroom 1	3.94m x 4.62m	12'11" x 15'2"
Ensuite	2.20m x 1.50m	7'2" x 4'11"
Bedroom 2	3.45m x 3.29m	11'4" x 10'9"
Bathroom	2.00m x 2.20m	6'6" x 7'2"
Total Internal Area	80.27 sqm	864 sqft
Apartment 10.4		
Kitchen/Living/Dining	8.01m x 3.97m	26'3" x 13'0"
Bedroom 1	4.37m x 3.05m	14'4" x 10'0"
Bathroom	2.00m x 2.20m	6'6" x 7'2"
Total Internal Area	50.96 sqm	548.5 sqft
Apartment 10.5		
Kitchen/Living/Dining	4.81m x 5.24m	15'9" x 17'2"
Bedroom 1	3.38m x 4.14m	11'1" x 13'7"
Ensuite	1.50m x 2.20m	4'11" x 7'2"
Bedroom 2	2.85m x 4.14m	9'4" x 13'7"
Bathroom	2.00m x 2.20m	6'6" x 7'2"
Total Internal Area	72.67 sqm	782.2 sqft
Apartment 10.6		
Kitchen/Living/Dining	3.63m x 7.26m	11'11" x 23'10"
Bedroom 1	3.47m x 4.34m	11'4" x 14'3"
Ensuite	1.50m x 2.20m	4'11" x 7'2"
Bedroom 2	3.16m x 4.34m	10'4" x 14'3"
Bathroom	2.00m x 2.2m	6'6" x 7'2"
Total Internal Area	78.01 sqm	839.6 sqft

FLOOR 11

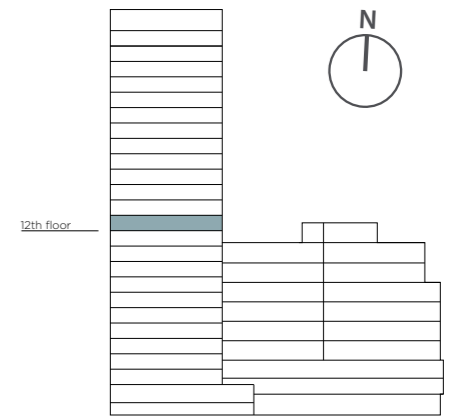


Key

Light Blue	Studio Apartment
Light Green	1 Bedroom Apartment
Medium Green	2 Bedroom Apartment
Dark Green	3 Bedroom Apartment
Grey	Commercial Area
W	Wardrobe
St	Store

Apartment 11.1		
Kitchen/Living/Dining	6.84m x 8.57m	22'5" x 28'1"
Bedroom 1	4.04m x 3.03m	13'3" x 9'11"
Bathroom	2.20m x 2.00m	7'2" x 6'6"
Total Internal Area	60.41 sqm	650.2 sqft
Apartment 11.2		
Kitchen/Living/Dining	3.90m x 7.32m	12'10" x 24'0"
Bedroom 1	2.85m x 4.03m	9'4" x 13'3"
Bathroom	2.00m x 2.20m	6'6" x 7'2"
Total Internal Area	53.26 sqm	573.2 sqft
Apartment 11.3		
Kitchen/Living/Dining	7.34m x 6.50m	24'1" x 21'4"
Bedroom 1	3.94m x 4.62m	12'11" x 15'2"
Ensuite	2.20m x 1.50m	7'2" x 4'11"
Bedroom 2	3.45m x 3.29m	11'4" x 10'9"
Bathroom	2.00m x 2.20m	6'6" x 7'2"
Total Internal Area	80.27 sqm	864 sqft
Apartment 11.4		
Kitchen/Living/Dining	8.01m x 3.97m	26'3" x 13'0"
Bedroom 1	4.37m x 3.05m	14'4" x 10'0"
Bathroom	2.00m x 2.20m	6'6" x 7'2"
Total Internal Area	50.96 sqm	548.5 sqft
Apartment 11.5		
Kitchen/Living/Dining	4.81m x 5.24m	15'9" x 17'2"
Bedroom 1	3.38m x 4.14m	11'1" x 13'7"
Ensuite	1.50m x 2.20m	4'11" x 7'2"
Bedroom 2	2.85m x 4.14m	9'4" x 13'7"
Bathroom	2.00m x 2.20m	6'6" x 7'2"
Total Internal Area	72.67 sqm	782.2 sqft
Apartment 11.6		
Kitchen/Living/Dining	3.63m x 7.26m	11'11" x 23'10"
Bedroom 1	3.47m x 4.34m	11'4" x 14'3"
Ensuite	1.50m x 2.20m	4'11" x 7'2"
Bedroom 2	3.16m x 4.34m	10'4" x 14'3"
Bathroom	2.00m x 2.20m	6'6" x 7'2"
Total Internal Area	78.01 sqm	839.6 sqft

FLOOR 12

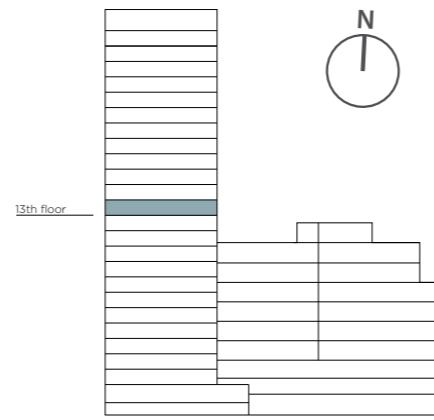


Key

Light Blue	Studio Apartment
Light Green	1 Bedroom Apartment
Medium Green	2 Bedroom Apartment
Dark Green	3 Bedroom Apartment
Grey	Commercial Area
W	Wardrobe
St	Store

Apartment 12.1		
Kitchen/Living/Dining	6.84m x 8.57m	22'5" x 28'1"
Bedroom 1	4.04m x 3.03m	13'3" x 9'11"
Bathroom	2.20m x 2.00m	7'2" x 6'6"
Total Internal Area	60.41 sqm	650.2 sqft
Apartment 12.2		
Kitchen/Living/Dining	3.90m x 7.32m	12'10" x 24'0"
Bedroom 1	2.85m x 4.03m	9'4" x 13'3"
Bathroom	2.00m x 2.20m	6'6" x 7'2"
Total Internal Area	53.26 sqm	573.2 sqft
Apartment 12.3		
Kitchen/Living/Dining	7.34m x 6.50m	24'1" x 21'4"
Bedroom 1	3.94m x 4.62m	12'11" x 15'2"
Ensuite	2.20m x 1.50m	7'2" x 4'11"
Bedroom 2	3.45m x 3.29m	11'4" x 10'9"
Bathroom	2.00m x 2.20m	6'6" x 7'2"
Total Internal Area	80.27 sqm	864 sqft
Apartment 12.4		
Kitchen/Living/Dining	8.01m x 3.97m	26'3" x 13'0"
Bedroom 1	4.37m x 3.05m	14'4" x 10'0"
Bathroom	2.00m x 2.20m	6'6" x 7'2"
Total Internal Area	50.96 sqm	548.5 sqft
Apartment 12.5		
Kitchen/Living/Dining	4.81m x 5.24m	15'9" x 17'2"
Bedroom 1	3.38m x 4.14m	11'1" x 13'7"
Ensuite	1.50m x 2.20m	4'11" x 7'2"
Bedroom 2	2.85m x 4.14m	9'4" x 13'7"
Bathroom	2.00m x 2.20m	6'6" x 7'2"
Total Internal Area	72.67 sqm	782.2 sqft
Apartment 12.6		
Kitchen/Living/Dining	3.63m x 7.26m	11'11" x 23'10"
Bedroom 1	3.47m x 4.34m	11'4" x 14'3"
Ensuite	1.50m x 2.20m	4'11" x 7'2"
Bedroom 2	3.16m x 4.34m	10'4" x 14'3"
Bathroom	2.00m x 2.20m	6'6" x 7'2"
Total Internal Area	78.01 sqm	839.6 sqft

FLOOR 13

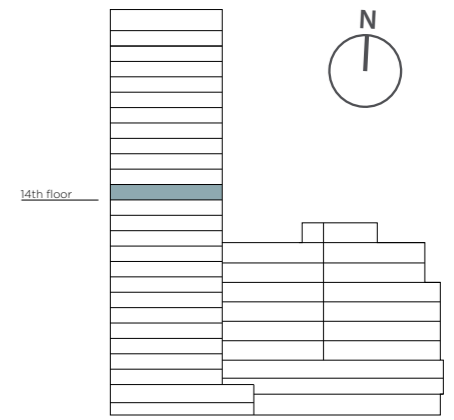


Key

Light Blue	Studio Apartment
Light Green	1 Bedroom Apartment
Medium Green	2 Bedroom Apartment
Dark Green	3 Bedroom Apartment
Grey	Commercial Area
W	Wardrobe
St	Store

Apartment 13.1		
Kitchen/Living/Dining	6.84m x 8.57m	22'5" x 28'1"
Bedroom 1	4.04m x 3.03m	13'3" x 9'11"
Bathroom	2.20m x 2.00m	7'2" x 6'6"
Total Internal Area	60.41 sqm	650.2 sqft
Apartment 13.2		
Kitchen/Living/Dining	3.90m x 7.32m	12'10" x 24'0"
Bedroom 1	2.85m x 4.03m	9'4" x 13'3"
Bathroom	2.00m x 2.20m	6'6" x 7'2"
Total Internal Area	53.26 sqm	573.2 sqft
Apartment 13.3		
Kitchen/Living/Dining	7.34m x 6.50m	24'1" x 21'4"
Bedroom 1	3.94m x 4.62m	12'11" x 15'2"
Ensuite	2.20m x 1.50m	7'2" x 4'11"
Bedroom 2	3.45m x 3.29m	11'4" x 10'9"
Bathroom	2.00m x 2.20m	6'6" x 7'2"
Total Internal Area	80.27 sqm	864 sqft
Apartment 13.4		
Kitchen/Living/Dining	8.01m x 3.97m	26'3" x 13'0"
Bedroom 1	4.37m x 3.05m	14'4" x 10'0"
Bathroom	2.00m x 2.20m	6'6" x 7'2"
Total Internal Area	50.96 sqm	548.5 sqft
Apartment 13.5		
Kitchen/Living/Dining	4.81m x 5.24m	15'9" x 17'2"
Bedroom 1	3.38m x 4.14m	11'1" x 13'7"
Ensuite	1.50m x 2.20m	4'11" x 7'2"
Bedroom 2	2.85m x 4.14m	9'4" x 13'7"
Bathroom	2.00m x 2.20m	6'6" x 7'2"
Total Internal Area	72.67 sqm	782.2 sqft
Apartment 13.6		
Kitchen/Living/Dining	3.63m x 7.26m	11'11" x 23'10"
Bedroom 1	3.47m x 4.34m	11'4" x 14'3"
Ensuite	1.50m x 2.20m	4'11" x 7'2"
Bedroom 2	3.16m x 4.34m	10'4" x 14'3"
Bathroom	2.00m x 2.20m	6'6" x 7'2"
Total Internal Area	78.01 sqm	839.6 sqft

FLOOR 14

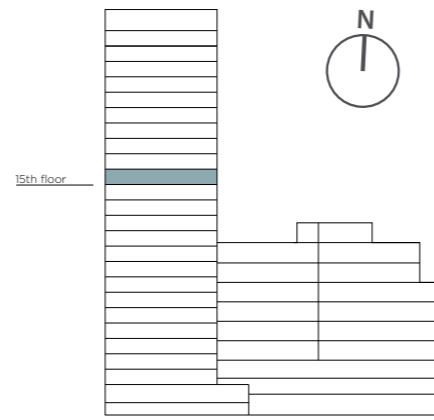


Key

Light Blue	Studio Apartment
Light Green	1 Bedroom Apartment
Medium Green	2 Bedroom Apartment
Dark Green	3 Bedroom Apartment
Grey	Commercial Area
W	Wardrobe
St	Store

Apartment 14.1		
Kitchen/Living/Dining	6.84m x 8.57m	22'5" x 28'1"
Bedroom 1	4.04m x 3.03m	13'3" x 9'11"
Bathroom	2.20m x 2.00m	7'2" x 6'6"
Total Internal Area	60.41 sqm	650.2 sqft
Apartment 14.2		
Kitchen/Living/Dining	3.90m x 7.32m	12'10" x 24'0"
Bedroom 1	2.85m x 4.03m	9'4" x 13'3"
Bathroom	2.00m x 2.20m	6'6" x 7'2"
Total Internal Area	53.26 sqm	573.2 sqft
Apartment 14.3		
Kitchen/Living/Dining	7.34m x 6.50m	24'1" x 21'4"
Bedroom 1	3.94m x 4.62m	12'11" x 15'2"
Ensuite	2.20m x 1.50m	7'2" x 4'11"
Bedroom 2	3.45m x 3.29m	11'4" x 10'9"
Bathroom	2.00m x 2.20m	6'6" x 7'2"
Total Internal Area	80.27 sqm	864 sqft
Apartment 14.4		
Kitchen/Living/Dining	8.01m x 3.97m	26'3" x 13'0"
Bedroom 1	4.37m x 3.05m	14'4" x 10'0"
Bathroom	2.00m x 2.20m	6'6" x 7'2"
Total Internal Area	50.96 sqm	548.5 sqft
Apartment 14.5		
Kitchen/Living/Dining	4.81m x 5.24m	15'9" x 17'2"
Bedroom 1	3.38m x 4.14m	11'1" x 13'7"
Ensuite	1.50m x 2.20m	4'11" x 7'2"
Bedroom 2	2.85m x 4.14m	9'4" x 13'7"
Bathroom	2.00m x 2.20m	6'6" x 7'2"
Total Internal Area	72.67 sqm	782.2 sqft
Apartment 14.6		
Kitchen/Living/Dining	3.63m x 7.26m	11'11" x 23'10"
Bedroom 1	3.47m x 4.34m	11'4" x 14'3"
Ensuite	1.50m x 2.20m	4'11" x 7'2"
Bedroom 2	3.16m x 4.34m	10'4" x 14'3"
Bathroom	2.00m x 2.20m	6'6" x 7'2"
Total Internal Area	78.01 sqm	839.6 sqft

FLOOR 15

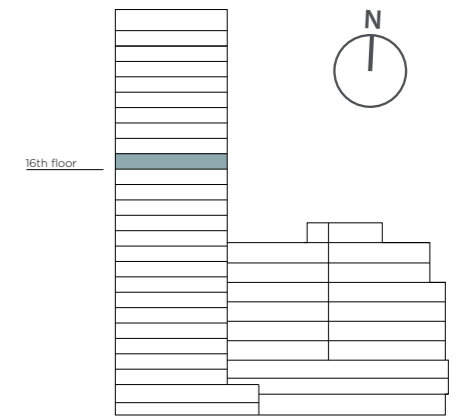


Key

Light Blue	Studio Apartment
Light Green	1 Bedroom Apartment
Medium Green	2 Bedroom Apartment
Dark Green	3 Bedroom Apartment
Grey	Commercial Area
W	Wardrobe
St	Store

Apartment 15.1		
Kitchen/Living/Dining	6.84m x 8.57m	22'5" x 28'1"
Bedroom 1	4.04m x 3.03m	13'3" x 9'11"
Bathroom	2.20m x 2.00m	7'2" x 6'6"
Total Internal Area	60.41 sqm	650.2 sqft
Apartment 15.2		
Kitchen/Living/Dining	3.90m x 7.32m	12'10" x 24'0"
Bedroom 1	2.85m x 4.03m	9'4" x 13'3"
Bathroom	2.00m x 2.20m	6'6" x 7'2"
Total Internal Area	53.26 sqm	573.2 sqft
Apartment 15.3		
Kitchen/Living/Dining	7.34m x 6.50m	24'1" x 21'4"
Bedroom 1	3.94m x 4.62m	12'11" x 15'2"
Ensuite	2.20m x 1.50m	7'2" x 4'11"
Bedroom 2	3.45m x 3.29m	11'4" x 10'9"
Bathroom	2.00m x 2.20m	6'6" x 7'2"
Total Internal Area	80.27 sqm	864 sqft
Apartment 15.4		
Kitchen/Living/Dining	8.01m x 3.97m	26'3" x 13'0"
Bedroom 1	4.37m x 3.05m	14'4" x 10'0"
Bathroom	2.00m x 2.20m	6'6" x 7'2"
Total Internal Area	50.96 sqm	548.5 sqft
Apartment 15.5		
Kitchen/Living/Dining	4.81m x 5.24m	15'9" x 17'2"
Bedroom 1	3.38m x 4.14m	11'1" x 13'7"
Ensuite	1.50m x 2.20m	4'11" x 7'2"
Bedroom 2	2.85m x 4.14m	9'4" x 13'7"
Bathroom	2.00m x 2.20m	6'6" x 7'2"
Total Internal Area	72.67 sqm	782.2 sqft
Apartment 15.6		
Kitchen/Living/Dining	3.63m x 7.26m	11'11" x 23'10"
Bedroom 1	3.47m x 4.34m	11'4" x 14'3"
Ensuite	1.50m x 2.20m	4'11" x 7'2"
Bedroom 2	3.16m x 4.34m	10'4" x 14'3"
Bathroom	2.00m x 2.20m	6'6" x 7'2"
Total Internal Area	78.01 sqm	839.6 sqft

FLOOR 16

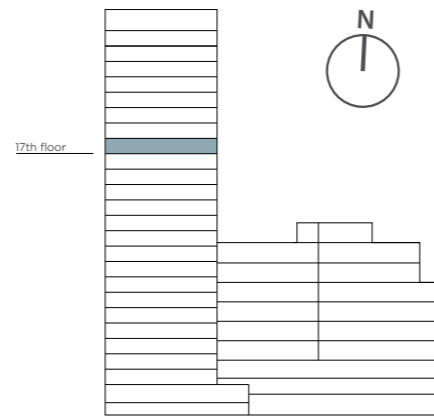


Key

Light Blue	Studio Apartment
Light Green	1 Bedroom Apartment
Medium Green	2 Bedroom Apartment
Dark Green	3 Bedroom Apartment
Grey	Commercial Area
W	Wardrobe
St	Store

Apartment 16.1		
Kitchen/Living/Dining	6.84m x 8.57m	22'5" x 28'1"
Bedroom 1	4.04m x 3.03m	13'3" x 9'11"
Bathroom	2.20m x 2.00m	7'2" x 6'6"
Total Internal Area	60.41 sqm	650.2 sqft
Apartment 16.2		
Kitchen/Living/Dining	3.90m x 7.32m	12'10" x 24'0"
Bedroom 1	2.85m x 4.03m	9'4" x 13'3"
Bathroom	2.00m x 2.20m	6'6" x 7'2"
Total Internal Area	53.26 sqm	573.2 sqft
Apartment 16.3		
Kitchen/Living/Dining	7.34m x 6.50m	24'1" x 21'4"
Bedroom 1	3.94m x 4.62m	12'11" x 15'2"
Ensuite	2.20m x 1.50m	7'2" x 4'11"
Bedroom 2	3.45m x 3.29m	11'4" x 10'9"
Bathroom	2.00m x 2.20m	6'6" x 7'2"
Total Internal Area	80.27 sqm	864 sqft
Apartment 16.4		
Kitchen/Living/Dining	8.01m x 3.97m	26'3" x 13'0"
Bedroom 1	4.37m x 3.05m	14'4" x 10'0"
Bathroom	2.00m x 2.20m	6'6" x 7'2"
Total Internal Area	50.96 sqm	548.5 sqft
Apartment 16.5		
Kitchen/Living/Dining	4.81m x 5.24m	15'9" x 17'2"
Bedroom 1	3.38m x 4.14m	11'1" x 13'7"
Ensuite	1.50m x 2.20m	4'11" x 7'2"
Bedroom 2	2.85m x 4.14m	9'4" x 13'7"
Bathroom	2.00m x 2.20m	6'6" x 7'2"
Total Internal Area	72.67 sqm	782.2 sqft
Apartment 16.6		
Kitchen/Living/Dining	3.63m x 7.26m	11'11" x 23'10"
Bedroom 1	3.47m x 4.34m	11'4" x 14'3"
Ensuite	1.50m x 2.20m	4'11" x 7'2"
Bedroom 2	3.16m x 4.34m	10'4" x 14'3"
Bathroom	2.00m x 2.20m	6'6" x 7'2"
Total Internal Area	78.01 sqm	839.6 sqft

FLOOR 17

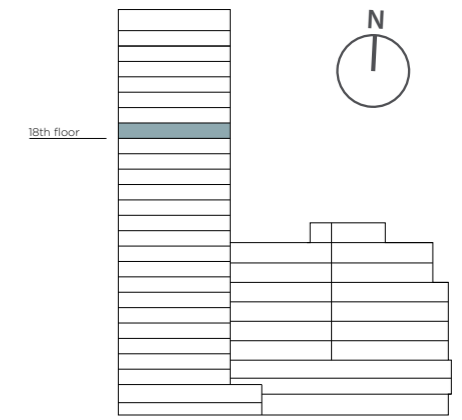


Key

Light Blue	Studio Apartment
Light Green	1 Bedroom Apartment
Medium Green	2 Bedroom Apartment
Dark Green	3 Bedroom Apartment
Grey	Commercial Area
W	Wardrobe
St	Store

Apartment 17.1			
Kitchen/Living/Dining	6.84m x 8.57m	22'5" x 28'1"	
Bedroom 1	4.04m x 3.03m	13'3" x 9'11"	
Bathroom	2.20m x 2.00m	7'2" x 6'6"	
Total Internal Area	60.41 sqm	650.2 sqft	
Apartment 17.2			
Kitchen/Living/Dining	3.90m x 7.32m	12'10" x 24'0"	
Bedroom 1	2.85m x 4.03m	9'4" x 13'3"	
Bathroom	2.00m x 2.20m	6'6" x 7'2"	
Total Internal Area	53.26 sqm	573.2 sqft	
Apartment 17.3			
Kitchen/Living/Dining	7.34m x 6.50m	24'1" x 21'4"	
Bedroom 1	3.94m x 4.62m	12'11" x 15'2"	
Ensuite	2.20m x 1.50m	7'2" x 4'11"	
Bedroom 2	3.45m x 3.29m	11'4" x 10'9"	
Bathroom	2.00m x 2.20m	6'6" x 7'2"	
Total Internal Area	80.27 sqm	864 sqft	
Apartment 17.4			
Kitchen/Living/Dining	8.01m x 3.97m	26'3" x 13'0"	
Bedroom 1	4.37m x 3.05m	14'4" x 10'0"	
Bathroom	2.00m x 2.20m	6'6" x 7'2"	
Total Internal Area	50.96 sqm	548.5 sqft	
Apartment 17.5			
Kitchen/Living/Dining	4.81m x 5.24m	15'9" x 17'2"	
Bedroom 1	3.38m x 4.14m	11'1" x 13'7"	
Ensuite	1.50m x 2.20m	4'11" x 7'2"	
Bedroom 2	2.85m x 4.14m	9'4" x 13'7"	
Bathroom	2.00m x 2.20m	6'6" x 7'2"	
Total Internal Area	72.67 sqm	782.2 sqft	
Apartment 17.6			
Kitchen/Living/Dining	3.63m x 7.26m	11'11" x 23'10"	
Bedroom 1	3.47m x 4.34m	11'4" x 14'3"	
Ensuite	1.50m x 2.20m	4'11" x 7'2"	
Bedroom 2	3.16m x 4.34m	10'4" x 14'3"	
Bathroom	2.00m x 2.20m	6'6" x 7'2"	
Total Internal Area	78.01 sqm	839.6 sqft	

FLOOR 18

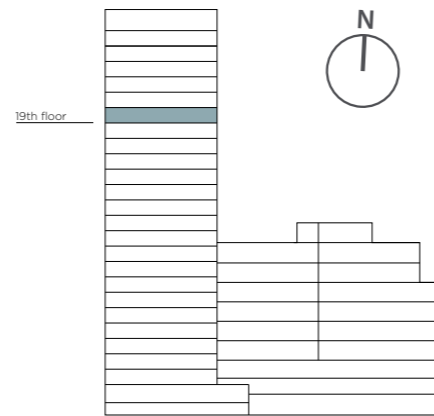


Key

Light Blue	Studio Apartment
Light Green	1 Bedroom Apartment
Medium Green	2 Bedroom Apartment
Dark Green	3 Bedroom Apartment
Grey	Commercial Area
W	Wardrobe
St	Store

Apartment 18.1			
Kitchen/Living/Dining	6.84m x 8.57m	22'5" x 28'1"	
Bedroom 1	4.04m x 3.03m	13'3" x 9'11"	
Bathroom	2.20m x 2.00m	7'2" x 6'6"	
Total Internal Area	60.41 sqm	650.2 sqft	
Apartment 18.2			
Kitchen/Living/Dining	3.90m x 7.32m	12'10" x 24'0"	
Bedroom 1	2.85m x 4.03m	9'4" x 13'3"	
Bathroom	2.00m x 2.20m	6'6" x 7'2"	
Total Internal Area	53.26 sqm	573.2 sqft	
Apartment 18.3			
Kitchen/Living/Dining	7.34m x 6.50m	24'1" x 21'4"	
Bedroom 1	3.94m x 4.62m	12'11" x 15'2"	
Ensuite	2.20m x 1.50m	7'2" x 4'11"	
Bedroom 2	3.45m x 3.29m	11'4" x 10'9"	
Bathroom	2.00m x 2.20m	6'6" x 7'2"	
Total Internal Area	80.27 sqm	864 sqft	
Apartment 18.4			
Kitchen/Living/Dining	8.01m x 3.97m	26'3" x 13'0"	
Bedroom 1	4.37m x 3.05m	14'4" x 10'0"	
Bathroom	2.00m x 2.20m	6'6" x 7'2"	
Total Internal Area	50.96 sqm	548.5 sqft	
Apartment 18.5			
Kitchen/Living/Dining	4.81m x 5.24m	15'9" x 17'2"	
Bedroom 1	3.38m x 4.14m	11'1" x 13'7"	
Ensuite	1.50m x 2.20m	4'11" x 7'2"	
Bedroom 2	2.85m x 4.14m	9'4" x 13'7"	
Bathroom	2.00m x 2.20m	6'6" x 7'2"	
Total Internal Area	72.67 sqm	782.2 sqft	
Apartment 18.6			
Kitchen/Living/Dining	3.63m x 7.26m	11'11" x 23'10"	
Bedroom 1	3.47m x 4.34m	11'4" x 14'3"	
Ensuite	1.50m x 2.20m	4'11" x 7'2"	
Bedroom 2	3.16m x 4.34m	10'4" x 14'3"	
Bathroom	2.00m x 2.20m	6'6" x 7'2"	
Total Internal Area	78.01 sqm	839.6 sqft	

FLOOR 19

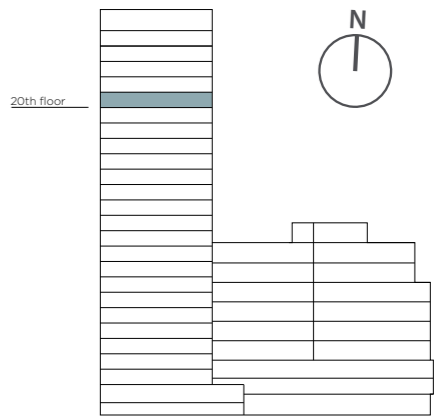


Key

Light Blue	Studio Apartment
Light Green	1 Bedroom Apartment
Medium Green	2 Bedroom Apartment
Dark Green	3 Bedroom Apartment
Grey	Commercial Area
W	Wardrobe
St	Store

Apartment 19.1		
Kitchen/Living/Dining	6.84m x 8.57m	22'5" x 28'1"
Bedroom 1	4.04m x 3.03m	13'3" x 9'11"
Bathroom	2.20m x 2.00m	7'2" x 6'6"
Total Internal Area	60.41 sqm	650.2 sqft
Apartment 19.2		
Kitchen/Living/Dining	3.90m x 7.32m	12'10" x 24'0"
Bedroom 1	2.85m x 4.03m	9'4" x 13'3"
Bathroom	2.00m x 2.20m	6'6" x 7'2"
Total Internal Area	53.26 sqm	573.2 sqft
Apartment 19.3		
Kitchen/Living/Dining	7.34m x 6.50m	24'1" x 21'4"
Bedroom 1	3.94m x 4.62m	12'11" x 15'2"
Ensuite	2.20m x 1.50m	7'2" x 4'11"
Bedroom 2	3.45m x 3.29m	11'4" x 10'9"
Bathroom	2.00m x 2.20m	6'6" x 7'2"
Total Internal Area	80.27 sqm	864 sqft
Apartment 19.4		
Kitchen/Living/Dining	8.01m x 3.97m	26'3" x 13'0"
Bedroom 1	4.37m x 3.05m	14'4" x 10'0"
Bathroom	2.00m x 2.20m	6'6" x 7'2"
Total Internal Area	50.96 sqm	548.5 sqft
Apartment 19.5		
Kitchen/Living/Dining	4.81m x 5.24m	15'9" x 17'2"
Bedroom 1	3.38m x 4.14m	11'1" x 13'7"
Ensuite	1.50m x 2.20m	4'11" x 7'2"
Bedroom 2	2.85m x 4.14m	9'4" x 13'7"
Bathroom	2.00m x 2.20m	6'6" x 7'2"
Total Internal Area	72.67 sqm	782.2 sqft
Apartment 19.6		
Kitchen/Living/Dining	3.63m x 7.26m	11'11" x 23'10"
Bedroom 1	3.47m x 4.34m	11'4" x 14'3"
Ensuite	1.50m x 2.20m	4'11" x 7'2"
Bedroom 2	3.16m x 4.34m	10'4" x 14'3"
Bathroom	2.00m x 2.20m	6'6" x 7'2"
Total Internal Area	78.01 sqm	839.6 sqft

FLOOR 20

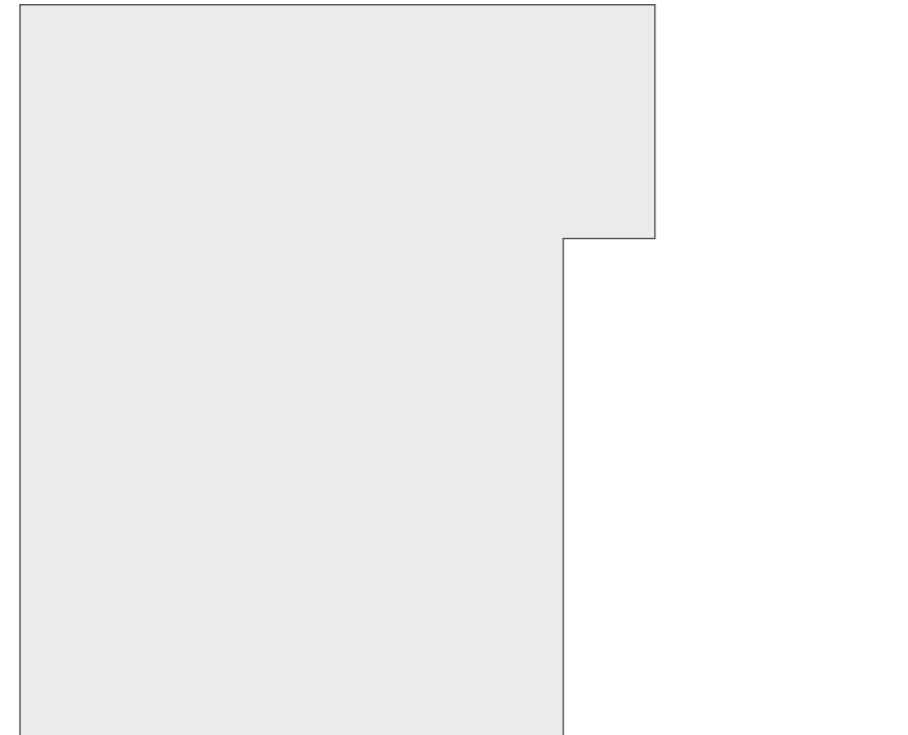
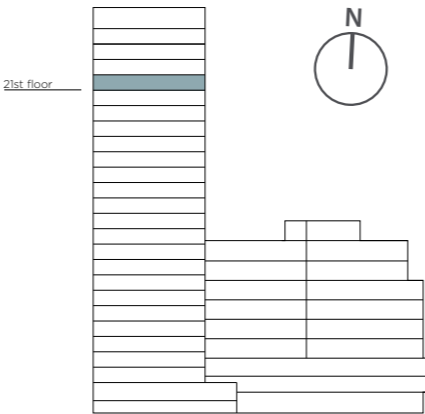


Key

Light Blue	Studio Apartment
Light Green	1 Bedroom Apartment
Medium Green	2 Bedroom Apartment
Dark Green	3 Bedroom Apartment
Grey	Commercial Area
W	Wardrobe
St	Store

Apartment 20.1		
Kitchen/Living/Dining	6.84m x 8.57m	22'5" x 28'1"
Bedroom 1	4.04m x 3.03m	13'3" x 9'11"
Bathroom	2.20m x 2.00m	7'2" x 6'6"
Total Internal Area	60.41 sqm	650.2 sqft
Apartment 20.2		
Kitchen/Living/Dining	3.90m x 7.32m	12'10" x 24'0"
Bedroom 1	2.85m x 4.03m	9'4" x 13'3"
Bathroom	2.00m x 2.20m	6'6" x 7'2"
Total Internal Area	53.26 sqm	573.2 sqft
Apartment 20.3		
Kitchen/Living/Dining	7.34m x 6.50m	24'1" x 21'4"
Bedroom 1	3.94m x 4.62m	12'11" x 15'2"
Ensuite	2.20m x 1.50m	7'2" x 4'11"
Bedroom 2	3.45m x 3.29m	11'4" x 10'9"
Bathroom	2.00m x 2.20m	6'6" x 7'2"
Total Internal Area	80.27 sqm	864 sqft
Apartment 20.4		
Kitchen/Living/Dining	8.01m x 3.97m	26'3" x 13'0"
Bedroom 1	4.37m x 3.05m	14'4" x 10'0"
Bathroom	2.00m x 2.20m	6'6" x 7'2"
Total Internal Area	50.96 sqm	548.5 sqft
Apartment 20.5		
Kitchen/Living/Dining	4.81m x 5.24m	15'9" x 17'2"
Bedroom 1	3.38m x 4.14m	11'1" x 13'7"
Ensuite	1.50m x 2.20m	4'11" x 7'2"
Bedroom 2	2.85m x 4.14m	9'4" x 13'7"
Bathroom	2.00m x 2.20m	6'6" x 7'2"
Total Internal Area	72.67 sqm	782.2 sqft
Apartment 20.6		
Kitchen/Living/Dining	3.63m x 7.26m	11'11" x 23'10"
Bedroom 1	3.47m x 4.34m	11'4" x 14'3"
Ensuite	1.50m x 2.20m	4'11" x 7'2"
Bedroom 2	3.16m x 4.34m	10'4" x 14'3"
Bathroom	2.00m x 2.20m	6'6" x 7'2"
Total Internal Area	78.01 sqm	839.6 sqft

FLOOR 21



Key

Light Blue	Studio Apartment
Light Green	1 Bedroom Apartment
Medium Green	2 Bedroom Apartment
Dark Green	3 Bedroom Apartment
Light Grey	Commercial Area
W	Wardrobe
St	Store

Apartment 21.1			
Kitchen/Living/Dining	6.84m x 8.57m	22'5" x 28'1"	
Bedroom 1	4.04m x 3.03m	13'3" x 9'11"	
Bathroom	2.20m x 2.00m	7'2" x 6'6"	
Total Internal Area	60.41 sqm	650.2 sqft	
Apartment 21.2			
Kitchen/Living/Dining	3.90m x 7.32m	12'10" x 24'0"	
Bedroom 1	2.85m x 4.03m	9'4" x 13'3"	
Bathroom	2.00m x 2.20m	6'6" x 7'2"	
Total Internal Area	53.26 sqm	573.2 sqft	
Apartment 21.3			
Kitchen/Living/Dining	7.34m x 6.50m	24'1" x 21'4"	
Bedroom 1	3.94m x 4.62m	12'11" x 15'2"	
Ensuite	2.20m x 1.50m	7'2" x 4'11"	
Bedroom 2	3.45m x 3.29m	11'4" x 10'9"	
Bathroom	2.00m x 2.20m	6'6" x 7'2"	
Total Internal Area	80.27 sqm	864 sqft	
Apartment 21.4			
Kitchen/Living/Dining	8.01m x 3.97m	26'3" x 13'0"	
Bedroom 1	4.37m x 3.05m	14'4" x 10'0"	
Bathroom	2.00m x 2.20m	6'6" x 7'2"	
Total Internal Area	50.96 sqm	548.5 sqft	
Apartment 21.5			
Kitchen/Living/Dining	4.81m x 5.24m	15'9" x 17'2"	
Bedroom 1	3.38m x 4.14m	11'1" x 13'7"	
Ensuite	1.50m x 2.20m	4'11" x 7'2"	
Bedroom 2	2.85m x 4.14m	9'4" x 13'7"	
Bathroom	2.00m x 2.20m	6'6" x 7'2"	
Total Internal Area	72.67 sqm	782.2 sqft	
Apartment 21.6			
Kitchen/Living/Dining	3.63m x 7.26m	11'11" x 23'10"	
Bedroom 1	3.47m x 4.34m	11'4" x 14'3"	
Ensuite	1.50m x 2.20m	4'11" x 7'2"	
Bedroom 2	3.16m x 4.34m	10'4" x 14'3"	
Bathroom	2.00m x 2.20m	6'6" x 7'2"	
Total Internal Area	78.01 sqm	839.6 sqft	





PENTHOUSES

LIVING THE HIGH LIFE



Penthouse CGI is indicative only

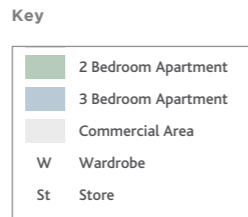
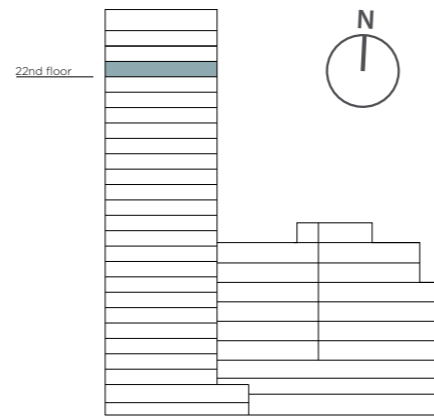
The twelve penthouses at The Clarendon offer unrivaled views towards the British countryside and the city of London. Their stunning design and luxurious furnishings make them the most desirable homes for miles.

The specification of the penthouses stands apart from the rest of the building with upgraded kitchen, flooring and sound system.



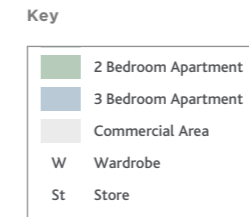
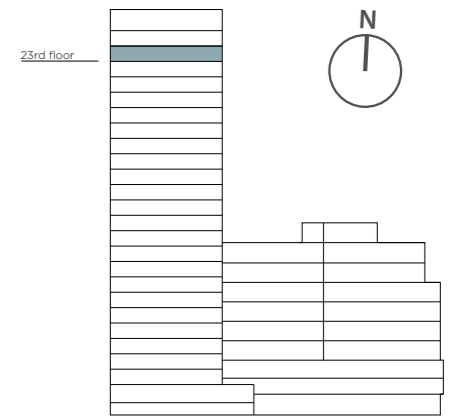
Penthouse CGI is indicative only

FLOOR 22



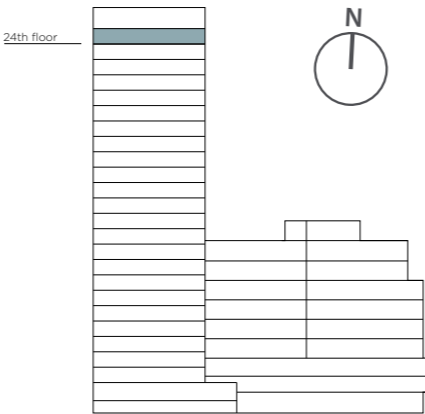
Penthouse 22.1		
Kitchen/Living/Dining	4.78m x 9.09m	15'8" x 29'10"
Bedroom 1	2.75m x 4.98m	16'4" x 9'0"
Ensuite	1.50m x 2.20m	4'11" x 7'2"
Bedroom 2	3.07m x 5.07m	10'0" x 16'8"
Ensuite 2	2.20m x 1.50m	7'2" x 4'11"
Bedroom 3	2.67m x 5.07m	8'9" x 16'8"
Bathroom	2.00m x 2.20m	6'6" x 7'2"
Total Internal Area	112.19 sqm	1207.6 sqft
Penthouse 22.2		
Kitchen/Living/Dining	8.62m x 4.35m	28'3" x 14'3"
Bedroom 1	4.13m x 4.61m	13'7" x 15'1"
Ensuite	2.20m x 1.50m	7'2" x 4'11"
Bedroom 2	4.02m x 3.16m	13'2" x 10'4"
Bedroom 3	2.78m x 3.83m	9'2" x 12'7"
Bathroom	2.00m x 2.20m	6'6" x 7'2"
Total Internal Area	102.42 sqm	1102.4 sqft
Penthouse 22.3		
Kitchen/Living/Dining	5.87m x 6.68m	19'3" x 21'11"
Bedroom 1	3.36m x 3.64m	11'0" x 11'11"
Ensuite	1.50m x 2.00m	4'11" x 7'2"
Bedroom 2	4.12m x 3.35m	13'6" x 11'0"
Bathroom	2.20m x 2.00m	7'2" x 6'6"
Total Internal Area	82.13 sqm	884.0 sqft
Penthouse 22.4		
Kitchen/Living/Dining	5.47m x 7.26m	17'11" x 23'10"
Bedroom 1	2.78m x 5.19m	9'2" x 17'0"
Ensuite	2.20m x 1.50m	7'2" x 4'11"
Bedroom 2	2.85m x 4.36m	9'4" x 14'4"
Bedroom 3	2.77m x 3.83m	9'1" x 12'7"
Bathroom	2.00m x 2.20m	6'6" x 7'2"
Total Internal Area	104.33 sqm	1122.9 sqft

FLOOR 23



Penthouse 23.1		
Kitchen/Living/Dining	4.78m x 9.09m	15'8" x 29'10"
Bedroom 1	2.75m x 4.98m	16'4" x 9'0"
Ensuite	1.50m x 2.20m	4'11" x 7'2"
Bedroom 2	3.07m x 5.07m	10'0" x 16'8"
Ensuite 2	2.20m x 1.50m	7'2" x 4'11"
Bedroom 3	2.67m x 5.07m	8'9" x 16'8"
Bathroom	2.00m x 2.20m	6'6" x 7'2"
Total Internal Area	112.19 sqm	1207.6 sqft
Penthouse 23.2		
Kitchen/Living/Dining	8.62m x 4.35m	28'3" x 14'3"
Bedroom 1	4.13m x 4.61m	13'7" x 15'1"
Ensuite	2.20m x 1.50m	7'2" x 4'11"
Bedroom 2	4.02m x 3.16m	13'2" x 10'4"
Bedroom 3	2.78m x 3.83m	9'2" x 12'7"
Bathroom	2.00m x 2.20m	6'6" x 7'2"
Total Internal Area	102.42 sqm	1102.4 sqft
Penthouse 23.3		
Kitchen/Living/Dining	5.87m x 6.68m	19'3" x 21'11"
Bedroom 1	3.36m x 3.64m	11'0" x 11'11"
Ensuite	1.50m x 2.00m	4'11" x 7'2"
Bedroom 2	4.12m x 3.35m	13'6" x 11'0"
Bathroom	2.20m x 2.00m	7'2" x 6'6"
Total Internal Area	82.13 sqm	884.0 sqft
Penthouse 23.4		
Kitchen/Living/Dining	5.47m x 7.26m	17'11" x 23'10"
Bedroom 1	2.78m x 5.19m	9'2" x 17'0"
Ensuite	2.20m x 1.50m	7'2" x 4'11"
Bedroom 2	2.85m x 4.36m	9'4" x 14'4"
Bedroom 3	2.77m x 3.83m	9'1" x 12'7"
Bathroom	2.00m x 2.20m	6'6" x 7'2"
Total Internal Area	104.33 sqm	1122.9 sqft

FLOOR 24

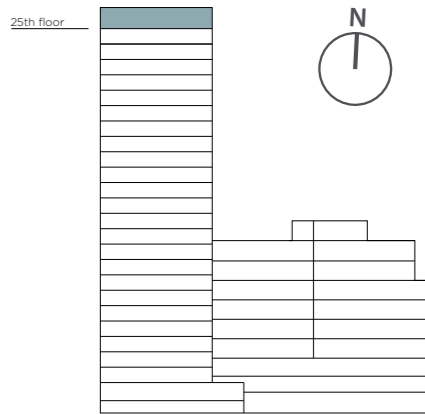


Key

- 2 Bedroom Apartment
- 3 Bedroom Apartment
- Commercial Area
- W Wardrobe
- St Store

Penthouse 24.1		
Kitchen/Living/Dining	4.78m x 9.09m	15'8" x 29'10"
Bedroom 1	2.75m x 4.98m	16'4" x 9'0"
Ensuite	1.50m x 2.20m	4'11" x 7'2"
Bedroom 2	3.07m x 5.07m	10'0" x 16'8"
Ensuite 2	2.20m x 1.50m	7'2" x 4'11"
Bedroom 3	2.67m x 5.07m	8'9" x 16'8"
Bathroom	2.00m x 2.20m	6'6" x 7'2"
Total Internal Area	112.19 sqm	1207.6 sqft
Penthouse 24.2		
Kitchen/Living/Dining	8.62m x 4.35m	28'3" x 14'3"
Bedroom 1	4.13m x 4.61m	13'7" x 15'1"
Ensuite	2.20m x 1.50m	7'2" x 4'11"
Bedroom 2	4.02m x 3.16m	13'2" x 10'4"
Bedroom 3	2.78m x 3.83m	9'2" x 12'7"
Bathroom	2.00m x 2.20m	6'6" x 7'2"
Total Internal Area	102.42 sqm	1102.4 sqft
Penthouse 24.3		
Kitchen/Living/Dining	5.87m x 6.68m	19'3" x 21'11"
Bedroom 1	3.36m x 3.64m	11'0" x 11'11"
Ensuite	1.50m x 2.00m	4'11" x 7'2"
Bedroom 2	4.12m x 3.35m	13'6" x 11'0"
Bathroom	2.20m x 2.00m	7'2" x 6'6"
Total Internal Area	82.13 sqm	884.0 sqft
Penthouse 24.4		
Kitchen/Living/Dining	5.47m x 7.26m	17'11" x 23'10"
Bedroom 1	2.78m x 5.19m	9'2" x 17'0"
Ensuite	2.20m x 1.50m	7'2" x 4'11"
Bedroom 2	2.85m x 4.36m	9'4" x 14'4"
Bedroom 3	2.77m x 3.83m	9'1" x 12'7"
Bathroom	2.00m x 2.20m	6'6" x 7'2"
Total Internal Area	104.33 sqm	1122.9 sqft

FLOOR 25 RESIDENTIAL TERRACE





Penthouse CGI is indicative only



SPECIFICATIONS

SPECIFICATIONS TO MATCH YOUR LIFESTYLE

Hallway

- High security entrance door with multi-point locking and door viewer
- Video entry smart panel
- Engineered oak flooring
- White painted finish to skirtings and architraves

Living/Dining

- Engineered oak flooring
- White painted finish to skirtings and architraves
- Media plate
- Recessed LED downlights with warm white lamps

Penthouse Apartments – Levels 22, 23 & 24:

- Sonos sound system in living room & master bedroom
- Engineered oak flooring in a Herringbone design

Kitchen

- High quality German kitchen units with handleless design
- Base units in white, contrasting wall cabinets in Pine laminate
- Contemporary tiled splashback throughout
- Quartz stone worktop, honed finish
- Drainer grooves in worktop (2 & 3 bed apartments)
- Smeg 4-ring hob, multi-function oven and extractor
- Smeg microwave (2 & 3 bed apartments)
- Integrated appliances: fridge freezer, dishwasher
- Satin chrome kitchen tap and satin stainless steel under-mounted sink

Penthouse Apartments – Levels 22, 23 & 24:

- Shaker style kitchen units with contemporary handles
- Blue-grey stained oak finish
- Herringbone tiled splashback
- Quartz stone worktop with draining grooves
- 5-ring induction hob
- Integrated wine cooler
- Microwave

Bedroom

- High quality fitted carpet with underlay in all bedrooms
- Fitted wardrobes with hanging rails, shelves and drawers to bedroom 1 only
- Media plate to master bedroom

Penthouse Apartments – Levels 22, 23 & 24:

- Fitted wardrobes with hanging rails and drawers in Bedroom 1 & Bedroom 2 only

Bathroom / En-suite

- Contemporary white sanitaryware
- Porcelain wall tiles to bath and shower areas
- Contemporary black brassware
- Porcelain floor tiles
- Ceramic tiled feature wall
- Glass shower and bath screens
- Matt black towel rail
- Mirrored wall cabinet with LED light below

Penthouse Apartments – Levels 22, 23 & 24:

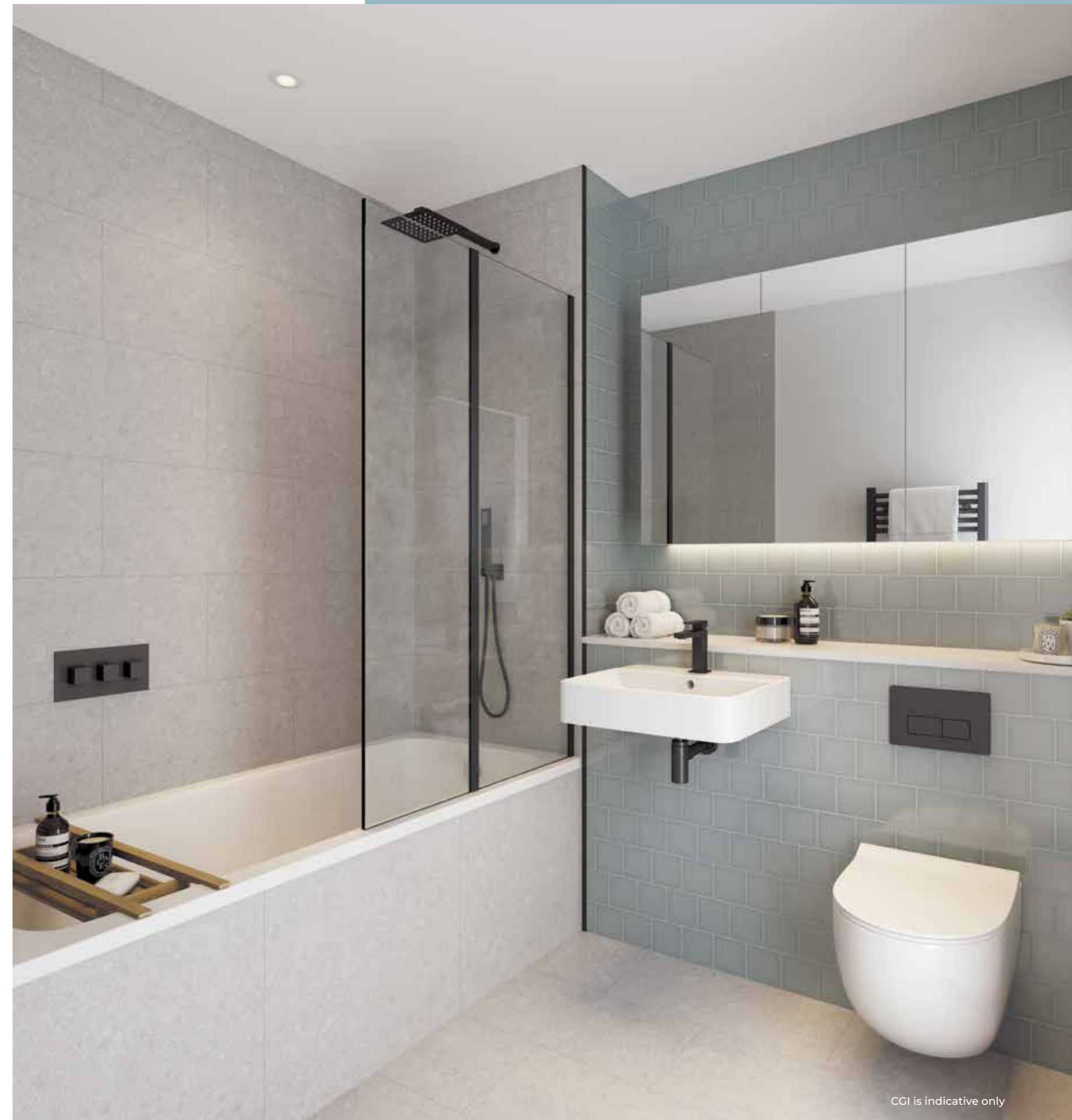
- Marble effect porcelain floor tiles
- Marble effect porcelain wall tiles to bath and shower
- Mirrored wall cabinet with LED light below

General

- Double glazed windows
- White paint finish to walls and ceilings
- Underfloor heating
- Recessed LED downlighters to all rooms
- Satin chrome ironmongery
- Satin chrome sockets and switches to kitchens
- White sockets and switches elsewhere
- Solid core timber internal doors with satin white lacquer finish
- Built-in utility cupboard with washer/dryer

Communal

- Concierge and residents' lounge
- 7th floor landscaped roof/yoga garden
- 25th floor landscaped sky garden
- Gymnasium
- Cinema
- CCTV to entrance and common areas
- Integrated building fire detection system
- 10 year building warranty



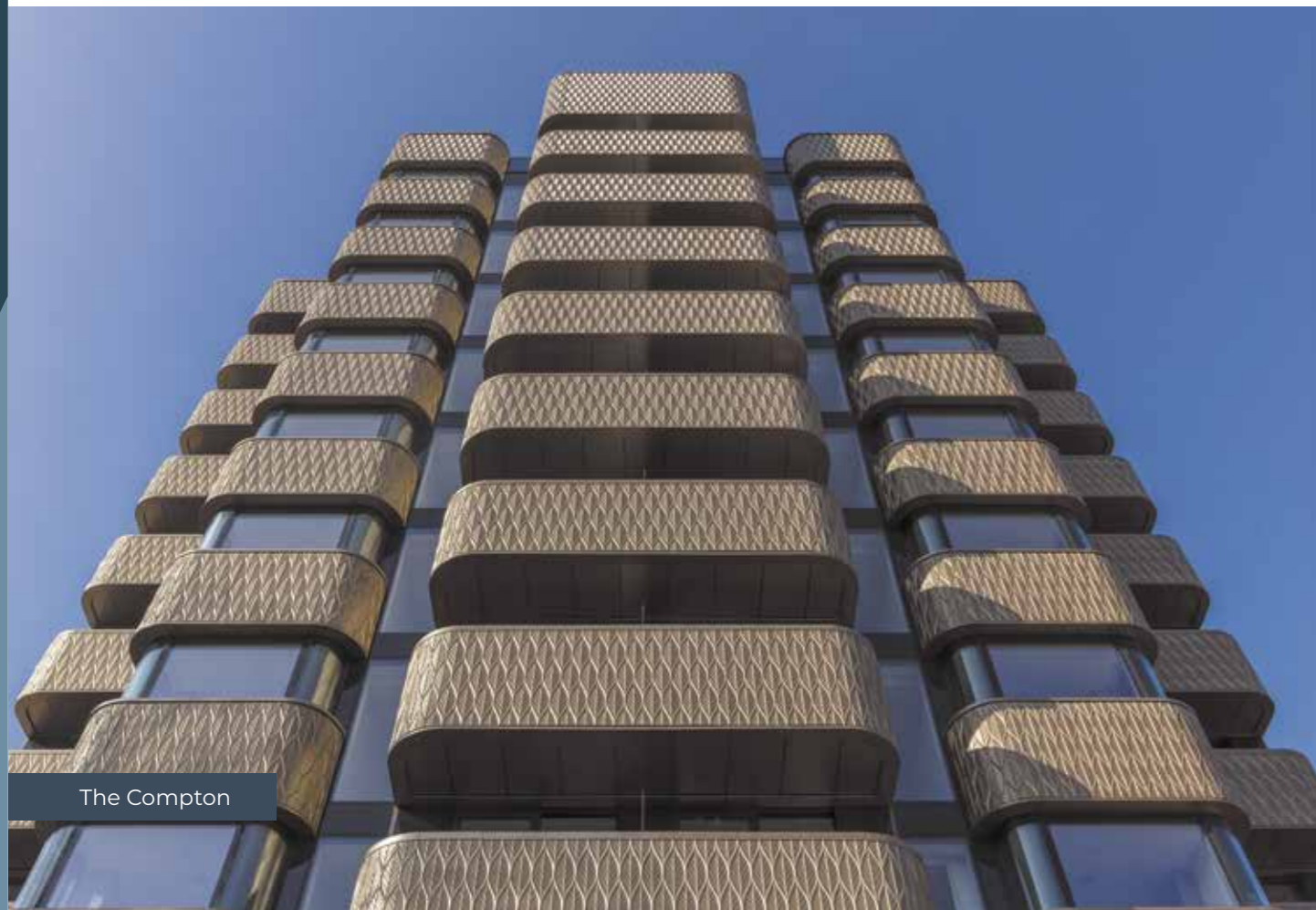
CGI is indicative only



One St John's Wood



Clapham Place penthouse terrace



The Compton



Clapham Place



A PASSION FOR LIVING

Regal London is a privately held value added real estate company focusing on residential-led mixed used developments in the London market. The company has over 4,000 residential units and 500,000 sq ft of high quality commercial space completed and underway, all of which have Regal London's hallmark of quality, with superior specifications and customer service.

An industry leader in architectural design, Regal London's ambition to be the best in London is reflected in their dynamic and striking portfolio of homes. From picturesque canal side apartment buildings, to majestic eight-bedroom mansions, the company's properties are the embodiment of luxury and are exceptionally elegant. Having acquired numerous high-profile industry awards, a Regal London property is considered an outstanding investment.

Due to the meticulous in-house design team and the incredibly creative interior design division, Regal London offers a boutique developer experience that ensures every exterior and interior detail is perfectly considered.

Headquartered in London, Regal also has offices in Hong Kong, Shanghai and Dubai.

For more information please visit regal-london.co.uk



**For further information, please contact our sales team:
sales@regal-london.co.uk**

Regal London/Regal Clarendon Ltd give notice that this brochure is produced for the general promotion of the properties at The Clarendon, Watford only and for no other purpose. Information and particulars are set out as a general outline for the guidance of intending purchasers and do not form part of an offer, invitation to treat or contract. All images are for illustration purposes only and are not intended as a visual representation of the specification or properties. These particulars have been prepared in good faith to give an overview of the properties at The Clarendon, Watford and are believed to be correct as at the date of publication, although accuracy cannot be guaranteed. Any intending purchasers cannot rely on them as statements or representation of fact.

Floorplans are intended to give a general indication of the proposed layout and provide approximate measurements only. Dimensions are not intended to be used for carpet sizes, appliance space or items of furniture. Total areas are provided as Gross Internal Area under the current RICS measuring practice. Design layout and specification may be subject to variation by Regal London/Regal Clarendon Ltd and/or third parties and their respective advisors or agents. The name 'The Clarendon' is for marketing purposes only and may not form part of the postal address.

Regal London retains the copyright of material in this brochure and may change the content or format at any time. GT&I-09/2021-v1

regal-london.co.uk



REGAL

LONDON